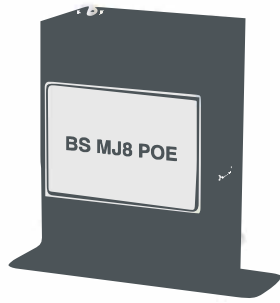
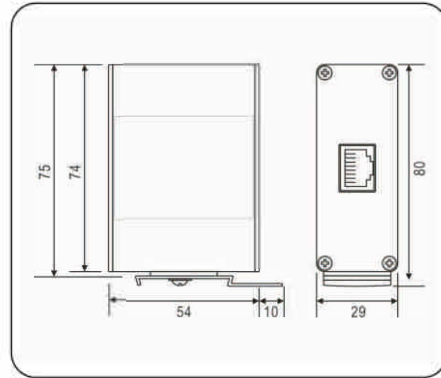


BS MJ8 POE

Dataline Surge Protector
with 35mm DIN rail



Basic circuit diagram:



• Technical data

Type	BS MJ8 POE	
Art.-No.	630 140	
Nominal dc voltage	U_N	48V-
Max. continuous dc voltage	U_C	60V-
Max. dc current	I_L	1A
Nominal discharge current line-line (8/20 μ s)	I_n	0.5kA
Nominal discharge current line-PG (8/20 μ s)	I_n	2kA
Max. discharge current (10/350 μ s)	I_{imp}	0.5kA
Voltage protection level	U_p	$\leq 20V$
Transmission frequency	f_G	$> 100MHz$
Insertion loss	a_E	$< 1dB$
Max. Data rate	V_s	1000MBit/s
Operating temperature range	$-40^\circ C \dots +80^\circ C$	
Configuration	8 wires+shielding	
Pinout by pair	1/2; 3/6; 4/5; 7/8	
Mounting on	35mm DIN rail	
Enclosure material	Aluminum	
Test standards	IEC 61643-21; GB 18802.21	
Certification	CE (LVD, EMC); Rohs	

• Product introduction

1. Summary

BS MJ8 POE is for installation at LZP 0_g-2 and higher interface or directly installed near the equipment; according to IEC standard for CAT 6 or Class E integrated wiring system; all the industrial Ethernet 10M, 100M, 1000MBit network surge protection 802.3af/at.

2. Main character

- For protecting computer data transmission system, network system and so on
- Good discharge capacity, low voltage protection level
- Quick response, high transmission speed, low signal attenuation
- RJ45 connection, easy for installation

3. Application

BS MJ8 POE is applied in offices and industries like Gigabit Ethernet, ATM or ISDN system, and like VoIP or PoE system can be protected. (e.g. Switch, router, HUB, modem and so on)

4. Application environment

- Temperature: $-40^\circ C \sim +80^\circ C$
- Relative humidity: $\leq 95\%$ ($25^\circ C$)

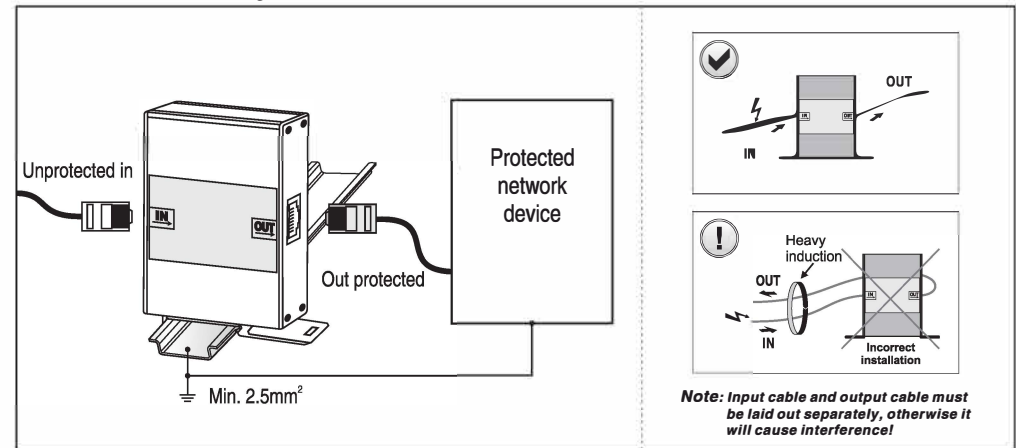
• Installation instruction

1. This product is connected in series to the protected device.
2. Mount the SPD on 35 mm DIN rail.
3. The OUT terminal should be connected to the protected devices.
4. SPD's earthing terminal must be connected to nearby earthing BusBar or the metal earthing enclosure of the protected device.
5. After above, you should ensure the circuit is functioning.

Regularly inspect the operating status, especially after lightning.

Once the communication is off, electrician should check/replace the SPD.

BS MJ8 POE installation diagram :



WARNING:

1. The device must be installed by electrically skilled person, conforming to national standards and safety regulations.
2. It is recommended that installation should be done under power off condition.