

8 Port Nway PoE Fast Ethernet Switch

Quick Installation Guide

FCC Warning

This device has been tested and found to comply with limits for a Class B digital device, pursuant to Part 15 of FCC Rules. These limits are designed to provide reasonable protection against harmful interference when the equipment is operated in a commercial environment. This equipment generates and radiates radio frequency energy and, if not installed and used in accordance with the user's manual, it may cause interference in which case users will be required to correct interference at their own expenses.

CE Warning

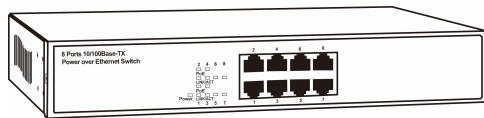
This is a Class B product. In a domestic environment, this product may cause radio interference in which case the user may be required to take adequate measures.

Introduction

This switch provides 8 10/100M ports. It was designed for easy installation and high performance in an environment where traffic is on the network and the number of users increases continuously.

It consists of 8 PSE/PoE ports. That can solve the limitation of the power outlet location and offer the system designer a flexible solution to locate the network device everywhere.

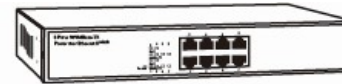
The compact rigid desktop size was specifically designed for small to medium workgroups. It can be installed where space is limited; moreover, it provides smooth network migration and easy upgrade to network capacity.



Package Contents

Before you start to install this switch, please verify your package that contains the following items:

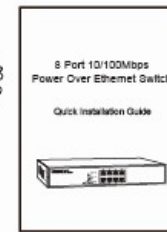
- One PoE Fast Ethernet Switch
- One Power Cord
- One Quick Installation Guide



8 Port Switch



Power Cord



Note: If any of these items is found missing or damaged, please contact your local supplier for replacement.

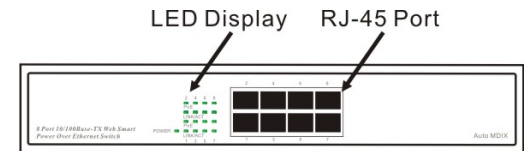
Key Features

- 8 Port 10/100M Nway (Auto-negotiation) Switch
- 8 PSE/PoE function ports
- Supporting the power Max. 30 W for each PSE/PoE port
- 11" Desktop size with metal case
- Can be installed in a 19" cabinet by rack-mount kits
- Auto-learn of networking configurations
- Auto-detect full/half-duplex modes for any port
- Dedicated full-duplex 200Mbps bandwidth
- Store-and-Forward switching methods
- IEEE 802.3x flow control for full-duplex and back-pressure flow control for half-duplex
- Non-blocking & Non-head-of-line blocking full wire speed forwarding
- Auto-MDI/MDI-X function for any port
- Smart plug & play

Front Panel (LEDs)

LED Indicators of 8 Port PoE 10/100M Switch

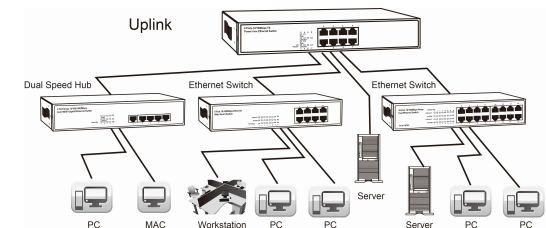
LED	Status	Description
Power	On	Power is on.
	Off	Power is off.
LINK/ACT	On	Port is for connection.
	Off	No connection.
	Flashing	Data is transmitting or receiving
PoE	On	Port is linked to Power Device
	Off	No Power Device is connected



Connections

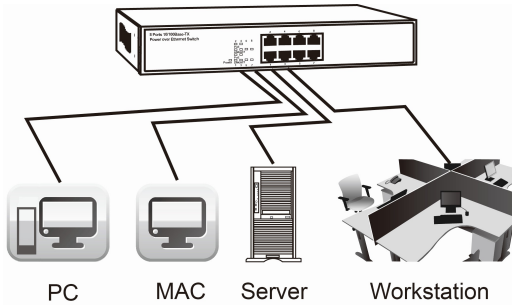
Switch/Hub to this 8 Port PoE Fast Ethernet Switch

This switch provides automatic crossover detection functionality for any port. It is simple and friendly to up-link to another switch without crossover cable.



PC/Other devices to this 8 Port PoE Fast Ethernet Switch

Via a twisted pair cable straight through, this switch can be connected to PCs, servers and other network devices.



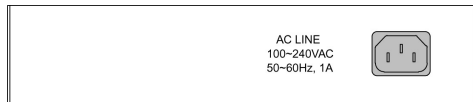
Power Device to this 8 Port PoE Fast Ethernet Switch and getting 48~56V power source through Cat. 5 cables

Using Cat. 5 twisted-pair cable to connect Power Device to the port 1~8 of this switch, and then this switch will supply 48~56V power to Power Device over Cat. 5 twisted-pair cable. Please be noted Power Device should also comply with IEEE 802.3af/ IEEE 802.3at standard.

Rear Panel (Power)

AC input

AC input (100~240V/AC, 50~60Hz) UL Safety



Technical Specifications

Standards	IEEE 802.3af IEEE 802.3at IEEE 802.3 10BaseT IEEE 802.3u 100BaseTX IEEE 802.3x Flow control
Features	Number of Ports: 8 PSE/PoE+ Ports MAC Address: 4K Buffer Memory: 1.5 Mbits Method: Store and Forward
Filtering/ Forwarding Rates	100Mbps port – 148,800pps 10Mbps – 14,880pps
Transmission Media	10BaseT Cat. 3, 4, 5 UTP/STP 100BaseTX Cat. 5 UTP/STP
LED Indicators	Per Port: LINK/ACT, PoE ACT/Status Per Unit: Power
Power Input	100~240V/AC, 50~60Hz to 48-56 VDC/130W
Power Output	48-56VDC/ 30W Max. Per Port
PoE Mode	Mode A
Power Consumption	130 Watts (Max)
Dimensions	266 × 160 × 44 mm (L x W x H)
Weight	1.6 kg
Operating Temperature	0 to 45°C
Storage Temperature	-20 to 85°C
Humidity	10 to 90% RH (non-condensing)
Certifications	FCC Class B, CE mark Commercial