

## Industrial media converters

Industrial Ethernet switch, With 1 to 4 Port 10/100/1000 Ethernet ports and 1 or 2 ports 1000Mbps SFP Slot, for connecting with devices like computer, switch, hub, server, etc., as well as powering network camera, industrial VoIP phone, wireless AP and other devices. Specially designed for harsh outdoor applications. Its 3KV network port surge protection can adapt to harsh outdoor environment and ensure the reliability of the uninterrupted PoE system. Power input also chooses industry-standard types of power.



### Features

- 1 Port 10/100/1000Mbps RJ45 with Auto Uplink , 1 port 1000Mbps SFP Slot
- Automatic MAC address learning and aging
- Automatically support IGMP (Multicasting)
- 10/100/1000Mbps Auto-negotiation , auto-MDI-MDI-X
- LED indicators for monitoring power/link/activity
- Supports 10/100/1000Mbps-Full/Half-duplex
- Supports Wall-mount and DIN-Rail installation for lightning protection
- Supports Daisy-Chain connection
- Supports Broadcast Storm Control
- Supports Relay output for power failure
- Super lightning protection, IP40 protection.
- Excellent heat elimination without cooling fan.
- Redundant dual DC power inputs.
- Redundant Power Inputs
- Apply to Urban Intelligent Traffic Monitoring System (ITS), Safe City.
- Harsh industrial environment or higher requirement
- -40°C-85°C operating temperature range.
- 5-Year Warranty



## Technical specifications

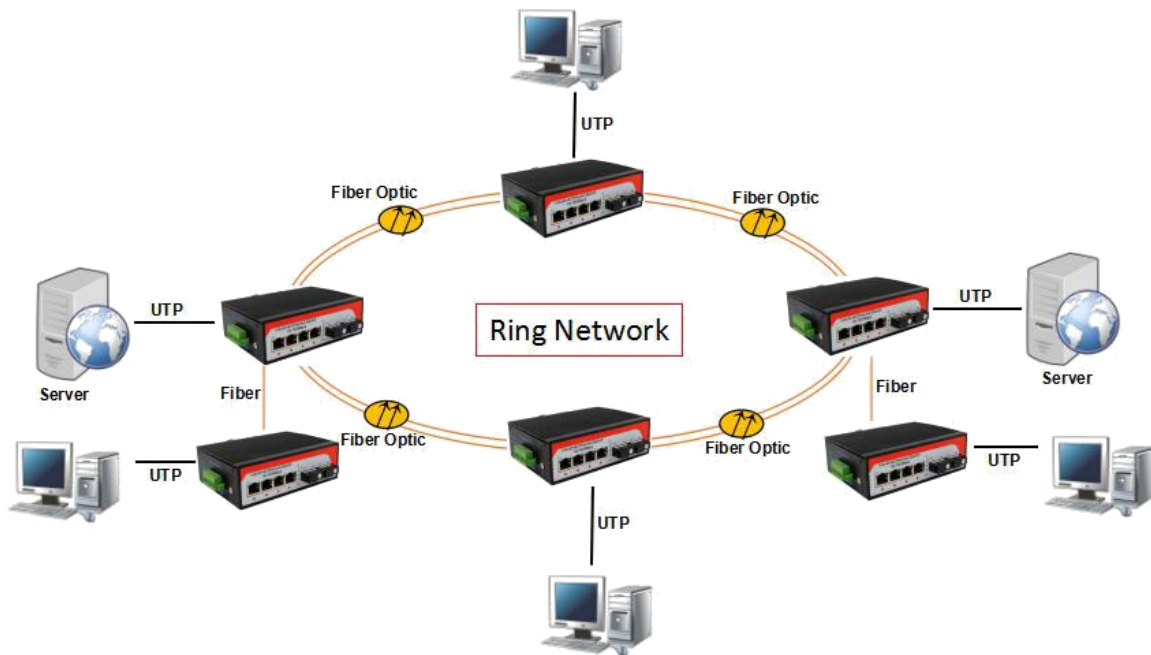
Product Name	1 Port 10/100/1000Base Industrial Ethernet Switch
Product Model	GMI-3111
Interface	1x 10/100/1000Base-T RJ45 port + 1x 1000Mbps SFP Slot
Network Protocols	IEEE802.3 10BASE-T; IEEE802.3i 10Base-T;IEEE802.3u;100Base-TX/FX;
	IEEE802.3ab 1000Base-T; IEEE802.3z 1000Base-X; IEEE802.3x;
Network Media	10BASE-T: Cat3,4,5 UTP(≤100 meter)
	100BASE-TX: Cat5 or later UTP(≤100 meter)
	1000BASE-TX: Cat6 or later UTP(≤100 meter)
Fiber Media	Multi-mode: 2KM
	Single-mode: 20/40/60/80KM
Performance Specification	Bandwidth: 20Gbps
	Packet Buffer Memory:2M
	Packet Forwarding Rate:1488000pps/port
	MAC Address Table: 16K
	Store-and-Forward
	Lightening protection, IP40 protection
	Power: PWR; Link; Link/Act
	Input Power: 2x10~58VDC (Terminal Block)

## Other Specifications

Working Environment	Working temperature: -40~85℃ ; Storage temperature: -45~85℃
	Relative Humidity: 5%~95 %( no condensation)
Industry Standard	FCC CFR47 Part 15,EN55022/CISPR22, Class A EMS:
	IEC61000-4-2 (ESD): ±8kV (contact), ±15kV (air)
	IEC61000-4-3 (RS): 10V/m (80MHz-2GHz)
	IEC61000-4-4 (EFT): Power Port: ±4kV; Data Port: ±2kV
	IEC61000-4-5 (Surge): Power Port: ±2kV/DM, ±4kV/CM; Data Port: ±2kV
	IEC61000-4-6 (CS): 3V (10kHz-150kHz); 10V (150kHz-80MHz)
	IEC61000-4-16 (Common mode conduction): 30V (cont.), 300V (1s)
Shell	IP40 protect grade, metal shell
Installation	DIN-Rail or Wall mounts
Packing List	1×Industrial Ethernet Switch (plus terminal block)
	1×User Manual/Certificate of quality/Warranty card
	1×DIN-Rail mounting kit
Certification	CE mark, commercial; FCC Part 15 Class B; VCCI Class B
	EN 55022 (CISPR 22), Class B
MTBF	300,000 hours



## Typical application



## Ordering information

SFP ports	Twisted pair ports	Part Number	Description
1	1	MCSFP1000/1+1ING	Industrial 10/100/1000M 1 SFP port + 1 RJ45 port, DIN Rail type,DC10~52V, exclude power adapter and SFP module
1	2	MCSFP1000/1+2ING	Industrial 10/100/1000M 1 SFP port + 2 RJ45 port, DIN Rail type,DC10~52V, exclude power adapter and SFP module
1	4	MCSFP1000/1+4ING	Industrial 10/100/1000M 1 SFP port + 4 RJ45 port, DIN Rail type,DC10~52V, exclude power adapter and SFP module
2	4	MCSFP1000/2+4ING	Industrial 10/100/1000M 2 SFP port + 4 RJ45 port, DIN Rail type,DC10~52V, exclude power adapter and SFP module

