

AGMAR FIBER OPTIC DISTRIBUTION FRAME PANEL(ODF) TYPE PSP SL.

SPECIFICATIONS :

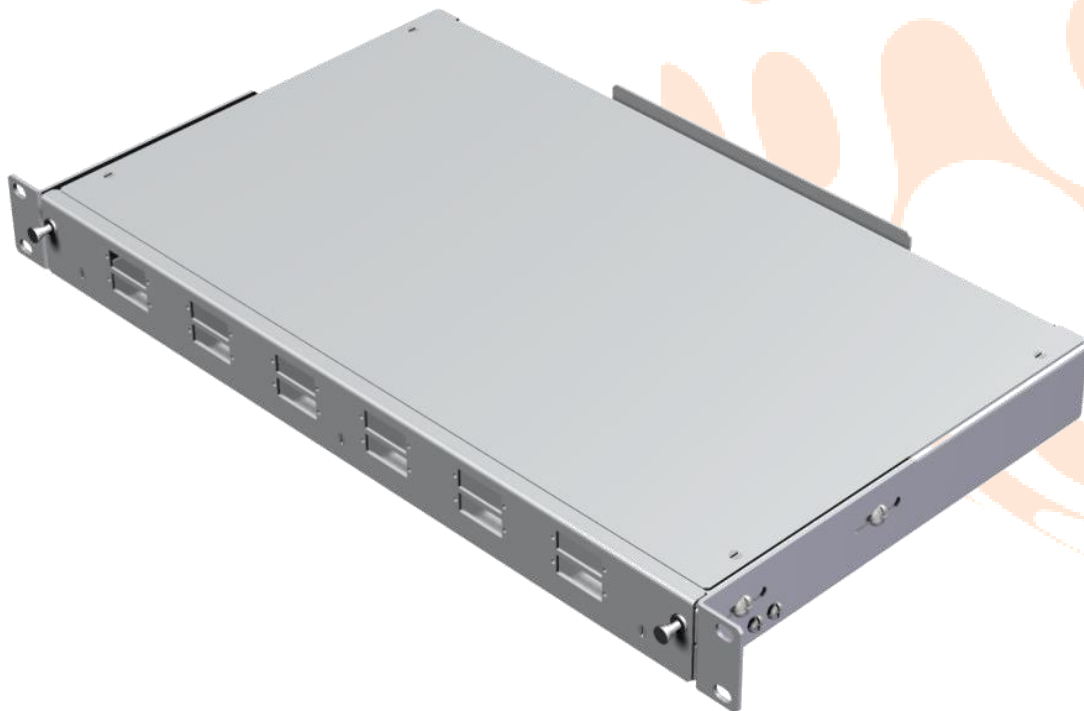
- Patch panel panel consists of a pull out drawer, a casing screwed to a 19" rack, replaceable front panel, cable entries and cassette base.
- Designed to store cable reserve and assembly of cassettes of fiber optic welds in the amount of 2 for the height of 1U up to 8 for the height of 4U
- Used in the system of 19" standard
- Equipped with a replaceable cassette fitting system and protection system against cassette shifting and turning.
- Enable termination of cables and their distribution
- Have cable entries: straight, angular or full ones.

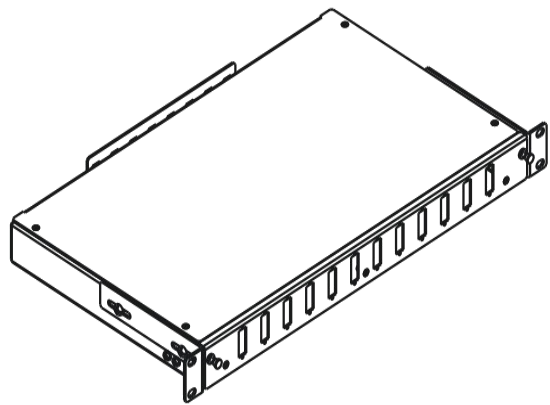
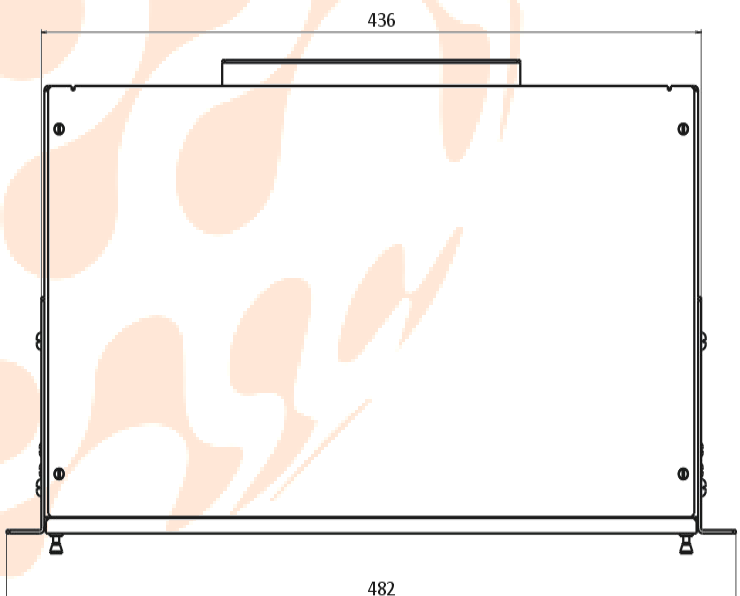
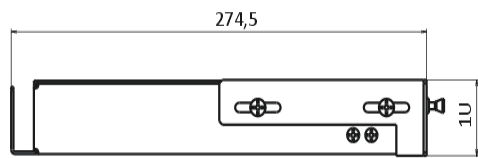
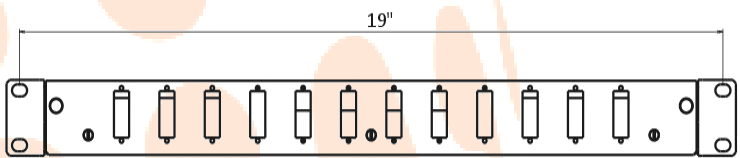
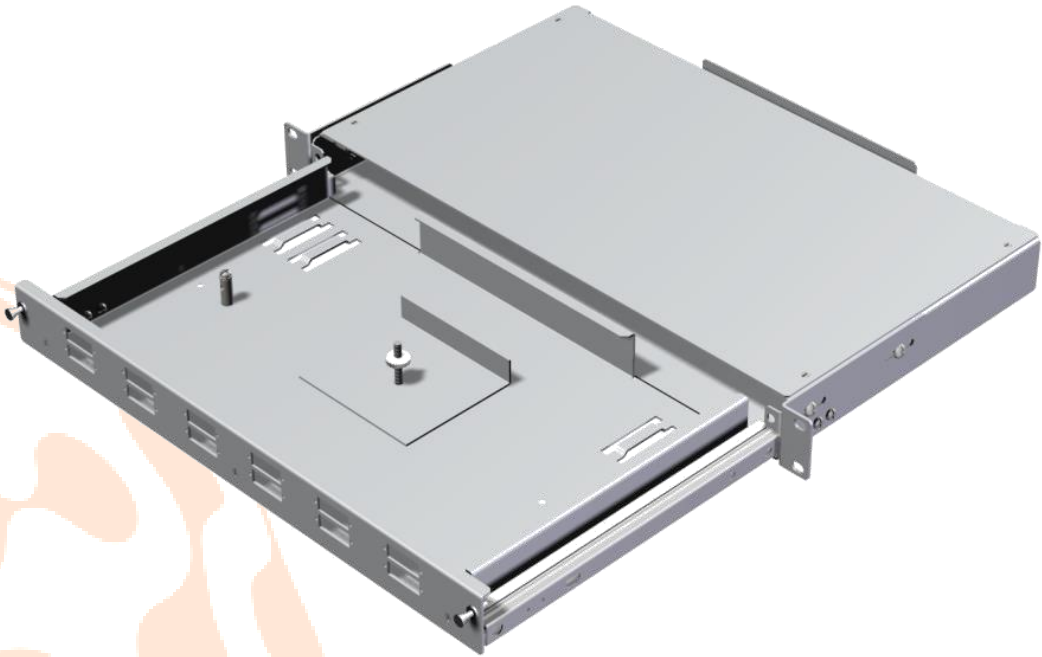
TECHNICAL DATA:

- Pulled out on ball guides.
- Available size – 1U, 2U, 3U, 4U.
- Material – powder coated steel.
- Color – RAL 7035.
- Number of assembled connectors – from 12 for the height of 1U up to 96 for the height of 4U .
- Replaceable front panels - SC/E2000, SC Duplex, ST, FC

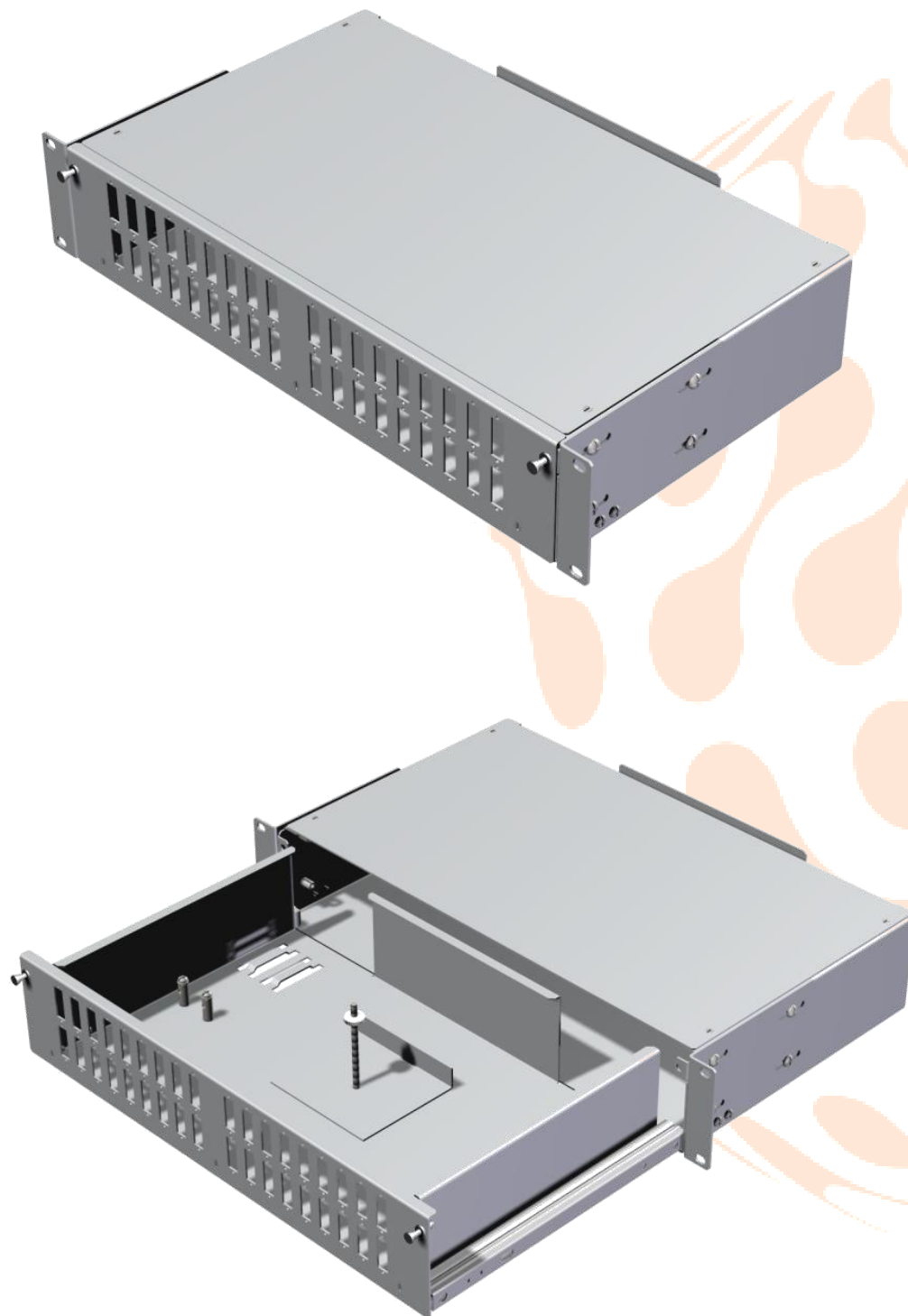
Construction of the distribution frame (3D drawings):

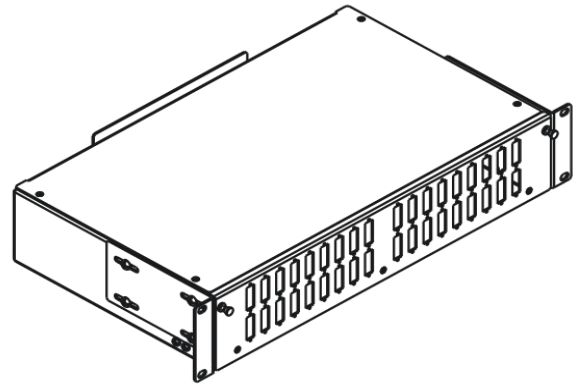
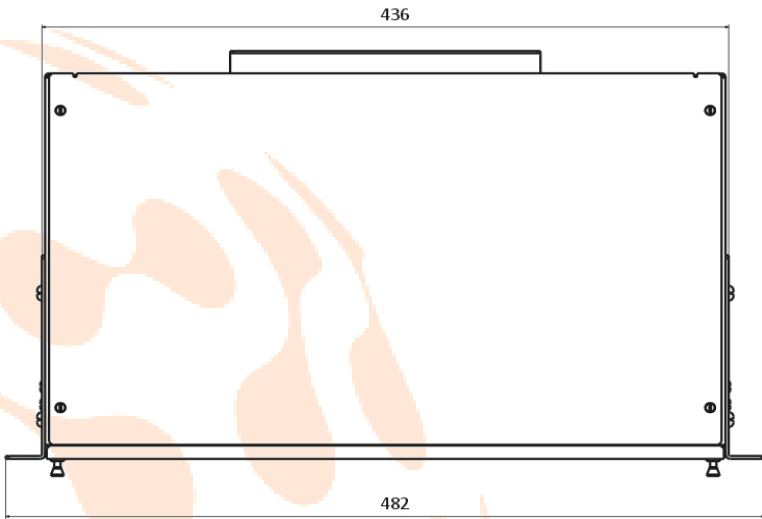
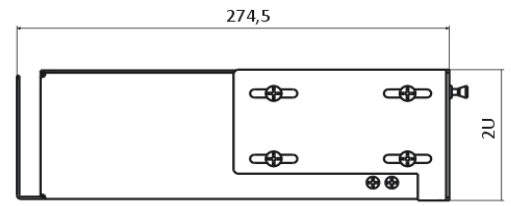
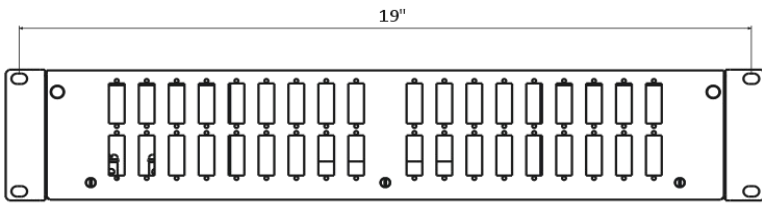
Catalogue number : PSP SL 1U/19/12/SC D





Catalogue number : PSP SL 2U/19/36/SC D





Front panels :

