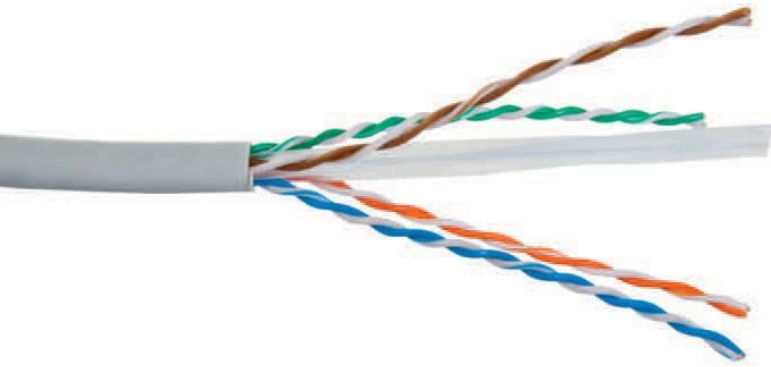


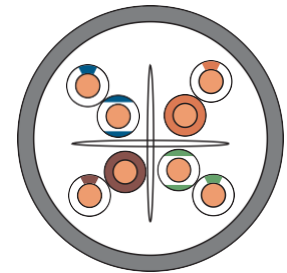
## 6 UTP



- for indoor use
- high quality of the workmanship - copper/
- tested to ensure performance on the distance of 90 meters with Fluorescent tubes D\*1-2300 e#sure/
- meets requirements of Cat 6!\*
- ISO 4#il#ble in 4 versions ( 5e!\*+55eF\*+56F\*+57SF\*+578SF\*+)

### Security) \*inst#ll#tion

twisted pair cable is intended to connect between distribution point of multi-signal users connectors & twisted pair cable shielded is perfectly suited for installations in computer networks phone networks systems etc & which may not be exposed to electromagnetic disturbance & its outer coating of PVC sheath meets requirements of IEC 60332-1 & 60332-2 & 60332-3 & 60332-4 & 60332-5 & 60332-6 & 60332-7 & 60332-8 & 60332-9 & 60332-10 & 60332-11 & 60332-12 & 60332-13 & 60332-14 & 60332-15 & 60332-16 & 60332-17 & 60332-18 & 60332-19 & 60332-20 & 60332-21 & 60332-22 & 60332-23 & 60332-24 & 60332-25 & 60332-26 & 60332-27 & 60332-28 & 60332-29 & 60332-30 & 60332-31 & 60332-32 & 60332-33 & 60332-34 & 60332-35 & 60332-36 & 60332-37 & 60332-38 & 60332-39 & 60332-40 & 60332-41 & 60332-42 & 60332-43 & 60332-44 & 60332-45 & 60332-46 & 60332-47 & 60332-48 & 60332-49 & 60332-50 & 60332-51 & 60332-52 & 60332-53 & 60332-54 & 60332-55 & 60332-56 & 60332-57 & 60332-58 & 60332-59 & 60332-60 & 60332-61 & 60332-62 & 60332-63 & 60332-64 & 60332-65 & 60332-66 & 60332-67 & 60332-68 & 60332-69 & 60332-70 & 60332-71 & 60332-72 & 60332-73 & 60332-74 & 60332-75 & 60332-76 & 60332-77 & 60332-78 & 60332-79 & 60332-80 & 60332-81 & 60332-82 & 60332-83 & 60332-84 & 60332-85 & 60332-86 & 60332-87 & 60332-88 & 60332-89 & 60332-90 & 60332-91 & 60332-92 & 60332-93 & 60332-94 & 60332-95 & 60332-96 & 60332-97 & 60332-98 & 60332-99 & 60332-100



### Construction

construction( 4)2  
 conductor core( 0,55 %  
 execution core( copper wire A\$uB  
 insulation core( \*+P" 0,95 %  
 thickness( 0,55 %  
 nominal diameter( 6,2 % P,&  
 characteristic impedance( 100 Ω  
 relative resistance( 9,5-0\$100%.

operational temperature( 01% '15' & t/ 260' &  
 installation temperature( 01% 0' & t/ 250' &  
 !, P( 693  
 +e5a6 S7ew -ns\$100 %.( ::45  
 bending radius( 3 x "i# eter  
 pair division( yes  
 color( %rey

Transmission frequency	1	4	10	16	20	31,25	62,5	100	200	250
Attenuation :2 dB\$100 %	74,3	65,3	59,3	56,2	54,8	51,9	47,4	44,3	39,8	38,3
Return loss :2 dB\$100 %	2	3,8	6	7,6	8,5	10,7	15,4	19,8	29	32,8
PS\$4F\$#T :2 dB\$100 %	72,3	63,3	57,3	54,2	52,8	49,9	45,4	42,3	37,8	36,3
PS\$4F\$#T :2 dB\$100 %	67,8	55,8	47,8	43,7	41,8	37,9	31,9	27,8	21,8	19,8
PS\$4F\$#T :2 dB\$100 %	64,8	52,8	44,8	40,7	38,8	34,9	28,9	24,8	18,8	16,8
Delay :ns\$100 %	552	547	545	543	542	541	540	539	538	537

