



CONTEG®
to complete your network

Headquarters in Prague, Czech Republic
Tel.: +420 261 219 182, Fax: +420 261 219 192
conteg@conteg.com, www.conteg.com

Czech Republic:	+420 261 219 182
Eastern Europe:	+49 172 848 4346
France:	+33 686 074 386
GER, SUI, AUT:	+49 170 523 4958
Middle East:	+971 50 871 4563
Russia:	+7 495 506 13 28
Western Europe:	+32 476 215 089

Data Sheet **ORN-01-22/18** **ORN-01-30/18**

Wall-mount fiber-optic splice boxes are used for termination and fiber slack storage of optical fibres outside the 19" racks. In order to cater for differing fiber counts there are two versions of the wall mount fiber termination and splice boxes available along with a wide assortment of connector panels.

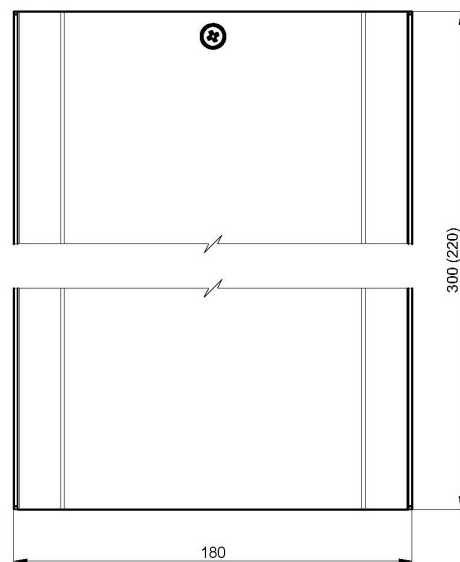
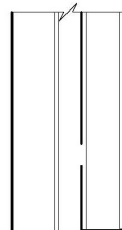
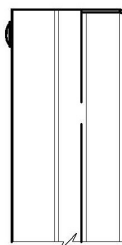
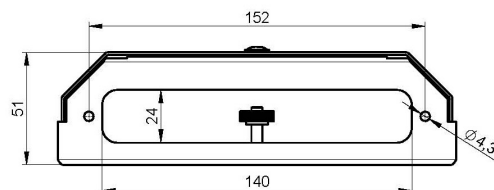
- Supports max. 8 connectors ST, SC or FC; 4 DSC or FCD
- Modular panels with openings for connectors
- Empty openings can be blanked off
- Cable inlets through PG connectors
- Holder for an optical cassette installation
- Colour design - powder paint RAL 7035

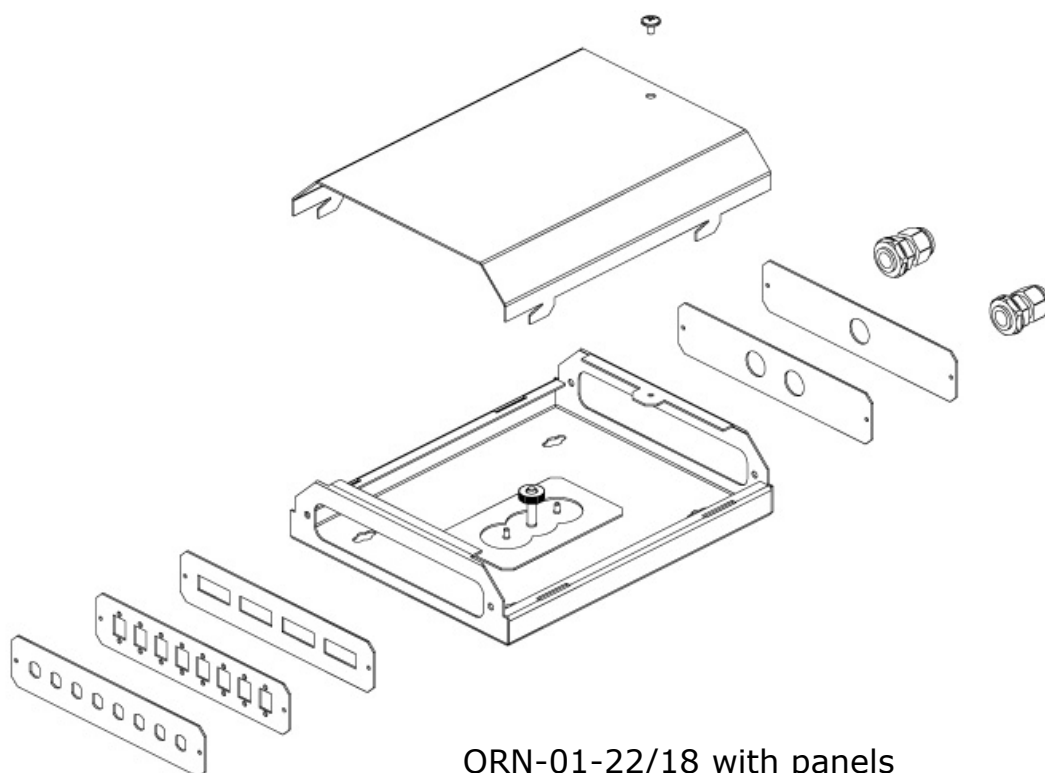


ORN-01-30/18



ORN-01-22/18





ORN-01-22/18 with panels

PANELS FOR WALL-MOUNTING FIBER-OPTIC SPLICE BOXES

ORN-M-8ST

ORN-M-8SC

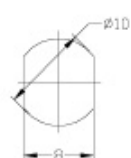
ORN-M-4DSC

ORN-M-1PG

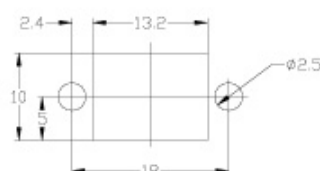
ORN-M-2PG

ORN-M-8FC

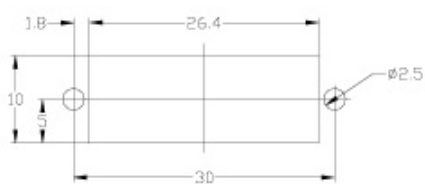
ORN-M-4FCD



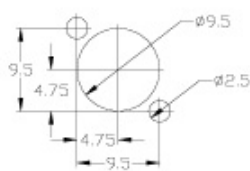
ST



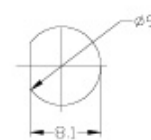
SC



DSC



FC



FCD