

Fiber Optic Components



FIND ALL LATEST CATALOGUES, SPECIFICATION SHEETS, MANUALS AND OTHER INFORMATION ON OUR WEBSITE:

www.sominetworks.com



Wide range of fiber optic cabling solutions, active equipment, 19" cabinets and accessories.

CONTENTS 3

COMPANY 4

FIBER OPTIC ADAPTERS..... 6

FIBER OPTIC PIGTAILS 8

Standart pigtails 8

12 colors premium pigtails 10

FIBER OPTIC PATCHCORDS 11

Standart patchcords 11

Premium patchcords..... 13

PRETERMINATED CABLES..... 14

FIBER OPTIC ATTENUATORS 15

PLC SPLITTERS 16

MPO/MTP 18

MPO/MTP Fan-out Cable..... 18

MPO Trunk Cable 18

MPO/MTP UltraDensity System 19

MPO/MTP Module 20

MPO Adapter..... 20

CWDM 21

FO CABLES..... 23

4-24F Singlemode Unitube..... 23

48F Singlemode Multitube..... 24

4-24F Singlemode Flat Drop 25

4-24F Singlemode Unitube Fig8..... 26

2F FTTH 27

INDOOR FIBER TERMINATION BOXES 28

INDOOR/OUTDOOR DISTRIBUTION WALL BOXES 32

19" FIBER OPTIC PATCH PANELS 34

ACCESSORIES..... 35

FIBER CLOSURES 36

FIBER OPTIC TOOLS 38



SOMI NETWORKS – **is an European distributor and manufacturer** of active fiber optic equipment, passive fiber optic network components, 19“ cabinets and accessories.

Started in the 2004 SOMI NETWORKS was one of the first suppliers of networking equipment in Eastern Europe, and since that year we managed to offer custom product solutions to our partners and distributors, and grow huge „know-how“ potential.

Started as a distributor, now **we can offer wide range of our own products** in the area of fiber active and passive components, 19“ cabinets and accessories. Some of the products are specially designed by our engineers, to fit most demanding needs of the biggest internet providers, datacenters and other applications.

Our main production is still based in Asia, but for custom products we have a **production lines in the center of Europe - Lithuania**, so we could be closer to you and offer a better reaction time.

We offer complete fiber optic connectivity solutions, for datacenters ISP providers and other applications. Our new UltraDensity MPO/ MTP solution sets the new standart in high density datacenter fiber management.

We are already pending certification for our quality and enviromental standarts **ISO 9001 and ISO14001**.

Our mission is to deliver our field tested solutions to the partners all over the world.





Fiber optic adapters



SC SIMPLEX SM



SC/APC SIMPLEX



SC SIMPLEX MM



SC SIMPLEX OM3



SC DUPLEX SM



SC/APC DUPLEX



SC DUPLEX MM



SC DUPLEX OM3



LC SIMPLEX SM



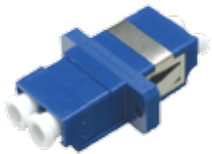
LC/APC SIMPLEX



LC SIMPLEX MM



LC SIMPLEX OM3



LC DUPLEX SM



LC/APC DUPLEX



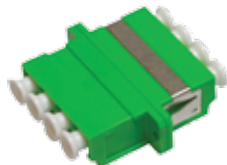
LC DUPLEX MM



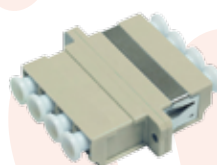
LC DUPLEX OM3



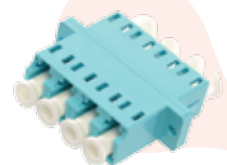
LC QUAD SM



LC/APC QUAD



LC QUAD MM



LC QUAD OM3



E2000 SM



E2000/APC



FC SIMPLEX



ST SIMPLEX

Application

- Telecommunication Networks
- FTTX, FTTH
- LAN, WAN, CATV and MAN applications
- Fiber Communication Systems
- Data Processing Networks
- Industrial and Military applications

Features:

- Simplex, duplex or quad versions
- Singlemode and Multimode supply
- Phosphor bronze or Zirconia ceramic sleeve
- Low insertion and back reflection loss
- High precision alignment sleeve
- Compact design
- Comply to ROHS requirements

Technical specifications and ordering information

Parameter	Unit	SC ADAPTERS			
		SINGLEMODE		MULTIMODE	
		UPC	APC	OM2	OM3
Part number	Simplex	ADSC9S	ADSCA9S	ADSC52S	ADSC53S
Part number	Duplex	ADSC9D	ADSCA9D	ADSC52D	ADSC53D
Colour		Blue	Green	Beige	Aqua
Insertion Loss	dB	≤0.2		≤0.3	
Sleeve part		Zirconia ceramic		Phospor bronze	
Casing		Plastic			
Durability	dB	≤0.1dB typical change, 500 matings			
Operating temperature	°C	from -40 to +80			

Parameter	Unit	LC ADAPTERS			
		SINGLEMODE		MULTIMODE	
		UPC	APC	OM2	OM3
Part number	Simplex	ADLC9S	ADLCA9S	ADLC52S	ADLC53S
Part number	Duplex	ADLC9D	ADLCA9D	ADLC52D	ADLC53D
Part number	Quad	ADLC9Q	ADLCA9Q	ADLC52Q	ADLC53Q
Colour		Blue	Green	Beige	Aqua
Insertion Loss	dB	≤0.2		≤0.3	
Sleeve part		Zirconia ceramic		Phospor bronze	
Casing		Plastic			
Durability	dB	≤0.1dB typical change, 500 matings			
Operating temperature	°C	from -40 to +80			

Parameter	Unit	ST AND FC ADAPTERS			
		SINGLEMODE		MULTIMODE	
		ST	FC	ST	FC
Part number	Simplex	ADST9S	ADFC9S	ADST52S	ADFC52S
Sleeve part		Zirconia ceramic		Phospor bronze	
Insertion Loss	dB	≤0.2		≤0.3	
Casing		Metal			
Colour		Metallic			
Durability	dB	≤0.1dB typical change, 500 matings			
Operating temperature	°C	from -40 to +80			

Parameter	Unit	E2000 ADAPTERS		
		SINGLEMODE		MULTIMODE
		UPC	APC	
Part number	Simplex	ADE29S	ADE2A9S	ADE252S
Colour		Blue	Green	Beige
Insertion Loss	dB	≤0.2		≤0.3
Sleeve part		Zirconia ceramic		
Casing		Plastic		
Durability	dB	≤0.1dB typical change, 500 matings		
Operating temperature	°C	from -40 to +80		

Ordering information:

ADAPTER	ADAPTER TYPE	FIBER TYPE	TYPE	FLANGLESS OPTION
AD	SC - SC UPC	9 - Singlemode 9/125 OS2	S - Simplex	F - Flangless
	LC - LC UPC	52 - Multimode 50/125 OM1 OM2	D - Duplex	
	ST - ST UPC	53 - Multimode 50/125 OM3	Q - Quad	
	FC - FC UPC	54 - Multimode 50/125 OM4		
	E2 - E2000			
	SCA - SC APC			
	LCA - LC APC			
	E2A - E2000 APC			

AD SC 9 D
Explanation: SC UPC singlemode duplex adapter with flanges

FIBER OPTIC PIGTAILS

Standart pigtails



Application

- Telecommunication Networks
- FTTX, FTTH
- LAN, WAN, CATV and MAN applications
- Fiber Communication Systems
- Data Processing Networks
- Industrial and Military applications

Features:

- Constructed from high quality connectors and fibers
- Semi-tight-buffer, easy strippable
- Connection easy to link properly
- High corrosion resistance and high interface performance
- Supplied with a test report detailing insertion and return loss
- UL standard connectors, comply with ROHS requirements



Technical specifications and ordering information

Parameter	Unit	Singlemode UPC and APC Pigtails			
		UPC		APC	
Connector type		SC	LC	SC	LC
Insertion Loss	dB	≤0.2		≤0.3	
Return Loss	dB	≥50		≥60	
Fiber type		G.652.D			
Pigtail length	m	2			
Buffer style	dB	Tight Buffer 900µm			
Buffer Material		PVC (LSZH optional)			
Operating temperature	°C	from -40 to +75			
Part number		PTSC92TP	PTLC92TP	PTSCA92TP	PTLCA92TP

Parameter	Unit	Multimode OM2 and OM3 Pigtails			
		OM2		OM3	
Connector type		SC	LC	SC	LC
Insertion Loss	dB	≤0.2			
Return Loss	dB	≥30			
Fiber type		G.651.1			
Pigtail length	m	2			
Buffer style	dB	Tight Buffer 900µm			
Buffer Material		PVC (LSZH optional)			
Operating temperature	°C	from -40 to +75			
Part number		PTSC522TP	PTLC522TP	PTSC532TP	PTLC532TP

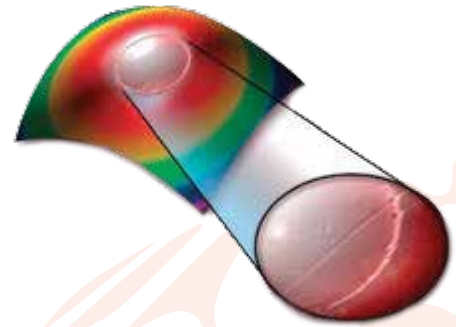
Parameter	Unit	Singlemode and Multimode ST and FC Pigtails			
		Singlemode		Multimode	
Connector type		ST	FC	ST	FC
Insertion Loss	dB	≤0.2		≤0.2	
Return Loss	dB	≥50		≥30	
Fiber type		SM - G.652D; MM – G.651.1			
Pigtail length	m	2			
Buffer style	dB	Tight Buffer 900µm			
Buffer Material		PVC (LSZH optional)			
Operating temperature	°C	from -40 to +75			
Part number		PTST92TP	PTFC92TP	PTST522TP	PTFC522TP

Ordering information:

PIGTAIL	CONNECTOR TYPE	FIBER TYPE	LENGTH	JACKET TYPE
PT	SC - SC UPC	9 - Singlemode 9/125 OS2	2 - 2m	TP - Tight Buffer PVC
	LC - LC UPC	51 - Multimode 62.5/125 OM1	3 - 3m	TL - Tight Buffer LSZH
	ST - ST UPC	52 - Multimode 50/125 OM2	5 - 5m	EP - Easy Strip PVC
	FC - FC UPC	53 - Multimode 50/125 OM3	... - ...m	EL - Easy Strip LSZH
	E2 - E2000 UPC	54 - Multimode 50/125 OM4		
	SCA - SC APC			
	LCA - LC APC			
	STA - ST APC			
	FCA - FC APC			
	E2A - E2000 APC			

PT SC 53 2 TP

Explanation: SC multimode OM3 2m pigtail with tight buffer PVC jacket



3D Testing for all premium pigtails

Application

- Telecommunication Networks
- FTTX, FTTH
- LAN, WAN, CATV and MAN applications
- Fiber Communication Systems
- Data Processing Networks
- Industrial and Military applications

Features:

- Constructed from high quality connectors and fibers
- Semi-tight-buffer, easy strippable
- Connection easy to link properly
- High corrosion resistance and high interface performance
- Supplied with a test report detailing insertion and return loss
- UL standard connectors, comply with ROHS requirements

Technical specifications and ordering information

Parameter	Unit	Singlemode 12 Colors Pigtails
Connector type		SC UPC
Insertion Loss	dB	≤0.2
Return Loss	dB	≥50
Fiber type		G.657.A
Pigtail length	m	2
Buffer style	dB	Tight Buffer 900µm
Buffer Material		LSZH
Colors		Red, Green, Blue, Yellow, White, Grey, Brown, Violet, Turquoise, Black, Orange, Pink
Operating temperature	°C	from -40 to +75
Part number		PTSC9A2TL

PIGTAIL	CONNECTOR TYPE	FIBER TYPE	LENGTH	JACKET TYPE
PT	SC - SC UPC SCA - SC APC	9A - Singlemode 9/125 OS2 G657A	2 - 2m	TL - Tight Buffer LSZH

PT	SC	9A	2	TL
----	----	----	---	----

Explanation: SC singlemode 2m pigtail with tight buffer LSZH jacket

Standart patchcords



SC SIMPLEX SM



SC SIMPLEX MM



SC/APC SIMPLEX



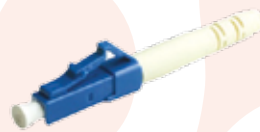
SC DUPLEX SM



SC DUPLEX MM



SC/APC DUPLEX



LC SIMPLEX SM



LC SIMPLEX MM



LC/APC SIMPLEX



LC DUPLEX SM



LC DUPLEX MM



LC/APC DUPLEX



E2000 SM



E2000 APC



FC SM



FC/APC SM



FC MM



ST SM



ST/APC



ST MM

Application

- Telecommunication
- CATV, FTTH, LAN
- Fiber optic sensors
- Optical transmission system
- Test equipment

Features:

- Push-pull, key-oriented coupling mechanism
- Ceramic ferrules connectors
- Low insertion loss, high return loss
- Excellent mechanical endurance
- High credibility and stability
- Good in repeatability and exchangeability
- End Face and Interference inspection

Technical Data

Parameter	Unit	SC, LC, FC, ST				E2000	
		SM			MM	SM	
		PC	UPC	APC	PC	PC	APC
Insertion Loss	dB	≤0.2	≤0.2	≤0.2	≤0.3	≤0.2	≤0.3
Return Loss	dB	≥45	≥50	≥60	≥30	≥55	≥75
Repeatability	dB	≤0.1					
Durability	dB	≤0.2dB typical change, 1000 matings					
Fiber type		SM - G.652D; MM – G.651.1					
Cable Material		PVC (LSZH optional)					
Strenght member		Aramid					
Core diametr	µm	Singlemode - 9µm; Multimode - 50µm					
Crush	N	1000					
Cable diameter	mm	2mm (3mm optional)					
Operating temperature	°C	from -40 to +80					

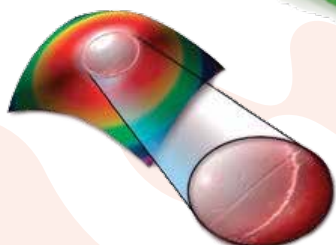
Ordering information:

PATCHCORD	A CONNECTOR	B CONNECTOR	FIBER TYPE	CABLE TYPE	LENGTH	-	SHEET THICKNESS	SHEET TYPE
PC	SC - SC UPC	SC - SC UPC	9 - Singlemode 9/125 OS2	S - Simplex	0.5 - 0.5m		09 - 0.9mm	P - PVC
	LC - LC UPC	LC - LC UPC	51 - Multimode 62.5/125 OM1	D - Duplex	1 - 1m		2 - 2mm	L - LSZH
	ST - ST UPC	ST - ST UPC	52 - Multimode 50/125 OM2		1.5 - 1.5m		3 - 3mm	A - Armored
	FC - FC UPC	FC - FC UPC	53 - Multimode 50/125 OM3		2 - 2m			AL - Armored LSZH
	E2 - E2000 UPC	E2 - E2000 UPC	54 - Multimode 50/125 OM4		...			
	SCA - SC APC	SCA - SC APC						
	LCA - LC APC	LCA - LC APC						
	STA - ST APC	STA - ST APC						
	FCA - FC APC	FCA - FC APC						
	E2A - E2000 APC	E2A - E2000 APC						

PT	SCA	SCA	9	D	1	-	3	L
----	-----	-----	---	---	---	---	---	---

Explanation: SC APC – SC APC singlemode duplex 1m length patchcord with 3mm LSZH jacket





3D Testing for all premium patchcords

Application

- Telecommunication
- CATV, FTTH, LAN
- Fiber optic sensors
- Optical transmission system
- Test equipment

Features:

- Push-pull, key-oriented coupling mechanism
- Ceramic ferrules connectors
- Low insertion loss, high return loss
- Excellent mechanical endurance
- High credibility and stability
- Good in repeatability and exchangeability
- End Face and Interference inspection
- Each cable has unique part number
- 3D testing on each cable

Technical Data

Parameter	Unit	SC, LC, FC, ST, MU
		SM
Insertion Loss	dB	≤0.15
Return Loss	dB	≥55
Fiber type		G.657.A
Cable Material		LSZH
Strenght member		Aramid
Crush	N	1000
Cable diameter	mm	2mm
Cable color	mm	Yellow, Grey
Operating temperature	°C	from -40 to +80

Ordering information:

PREMIUM PATCHCORD	A CONNECTOR	B CONNECTOR	FIBER TYPE	CABLE TYPE	LENGTH	-	SHEET THICKNESS	SHEET TYPE	COLOUR
PPC	SC - SC UPC	SC - SC UPC	9A - Singlemode 9/125 O52, G657A	S - Simplex	0.5 - 0.5m	-	09 - 0.9mm	P - PVC	G - Grey
	LC - LC UPC	LC - LC UPC		D - Duplex	1 - 1m		2 - 2mm	L - LSZH	Y - Yellow
	ST - ST UPC	ST - ST UPC			1.5 - 1.5m		3 - 3mm	A - Armored	
	FC - FC UPC	FC - FC UPC			2 - 2m		AL - Armored LSZH		
	E2 - E2000 UPC	E2 - E2000 UPC			...				
	SCA - SC APC	SCA - SC APC							
	LCA - LC APC	LCA - LC APC							
	STA - ST APC	STA - ST APC							
	FCA - FC APC	FCA - FC APC							
	E2A - E2000 APC	E2A - E2000 APC							

PPC SCA SCA 9A S 1 - 2 L G

Explanation: SC APC – SC APC singlemode simplex 1m length patchcord with 2mm LSZH grey color jacket

PRETERMINATED CABLES



Application

- Telecommunication
- CATV, FTTH, LAN
- Fiber optic sensors
- Optical transmission system
- Test equipment

Features:

- Single cable assembly with multiple fiber terminations
- Multiple fiber construction types
- Ceramic ferrules connectors
- Low insertion loss, high return loss
- SC, LC, ST, FC, MT-RJ, and MU connector types optional
- Excellent mechanical endurance
- High credibility and stability

Connectors	SC, LC, FC, ST, MTRJ			
Cable Strand	4, 6, 8, 12, 24, 48, 96, 144 Fiber			
Optical Fiber	Singlemode OS1/OS2			Multimode OM1/OM2/OM3/OM4
Insertion Loss	≤0.2dB PC	≤0.2dB UPC	≤0.2dB APC	≤0.3dB
Return Loss	≥45dB PC	≥50dB UPC	≥60dB APC	≥30dB
Durability	≤0.2dB typical change, 1000 matings			
Cable Jacket Material	PVC or LSZH			
Operating temperature	from -40°C to +80°C			

- Custom assemblies with various types of jacket and cable length

Ordering information:

PRETERMINATED CABLE	NUMBER OF FIBERS	A END CONNECTOR	A END TERMINATION TYPE	B END CONNECTOR	B END TERMINATION TYPE	FIBER TYPE	CABLE LENGTH	JACKET TYPE	OPTION
PR	4	SC - SC UPC	F - FANOUT	SC - SC UPC	F - FANOUT	9 - Singlemode 9/125 OS2	01 - 1m	P - PVC	P - Pulling Eye
	6	LC - LC UPC	S - STAGGERED	LC - LC UPC	S - STAGGERED	9A - Singlemode 9/125 G657A	02 - 2m	L - LSZH	
	8	ST - ST UPC		ST - ST UPC		61 - Multimode 62.5/125 OM1	...		
	12	FC - FC UPC		FC - FC UPC		52 - Multimode 50/125 OM2			
	24	SCA - SC APC		SCA - SC APC		53 - Multimode 50/125 OM3			
	48	LCA - LC APC		LCA - LC APC		54 - Multimode 50/125 OM4			
	...	STA - ST APC		STA - ST APC					
		FCA - FC APC		FCA - FC APC					
		MTM - MTRJ Male		MTM - MTRJ Male					
		MTF - MTRJ Female		MTF - MTRJ Female					

PR 8 SCA F SCA F 9 05 P P

Explanation: 8 fibers SC APC fanout – SC APC fanout singlemode 5m length preterminated cable with PVC jacket and pulling eye



Application

- Passive optical networks
- Fiber optical sensor
- Optical power receivers protection
- Multi wavelength systems balancing
- EDFA loop tests and measurements

Features:

- Metal ion doped fiber
- Attenuation levels ranging from 1dB to 30dB
- Low back reflection
- High power endurance
- Maximum stability, reliability and flat spectral response
- 100% IL, RL and visual inspection tested
- Easy to connect/disconnect (Push-Pull)
- High mechanical resistance

Technical Data

Item	Parameter
Operating Wavelength	1310nm - 1550nm
Attenuation Range	1~30dB
Return Loss	PC:≥50dB UPC: ≥55dB APC: ≥65dB
Attenuation Tolerance	±0.5dB (1-10dB) ±1.0dB (11-30dB)
Polarization Dependent Loss	<0.2dB
Maximum Optical Input Power	200mW
Operating Temperature	-40°C+80°C

Ordering information:

ATTENUATOR	CONNECTOR TYPE	POLISHING	WAVELENGTH	ATTENUATION
AT	SC	U - UPC	1310	1 - 1dB
	LC	A - APC	1550	2 - 2dB
	ST			3 - 3dB
	FC			...
	E2 - E2000			30 - 30dB

AT	SC	U	13	-	10
----	----	---	----	---	----

Explanation: SC UPC 1310 wavelength 10dB attenuator

Overview

Planar Lightwave Circuit Splitter (PLC Splitters) is a technology based on planar waveguide optical power distribution products, with low insertion loss and polarization dependent loss, small size, wide operating wavelength range, high channel uniformity and good characteristics. Especially for passive optical network (EPON, BPON, GPON, etc.) to connect the central office and terminal equipment and optical signal splitter to achieve. All products comply with Telcordia GR-1209-CORE, Telcordia GR-1221-CORE, YD / T 1117-2001 and RoHS standards. Optic King 1xN technology can provide a full range of 2xN products, and customized for all occasions in the optical splitter.

Features:

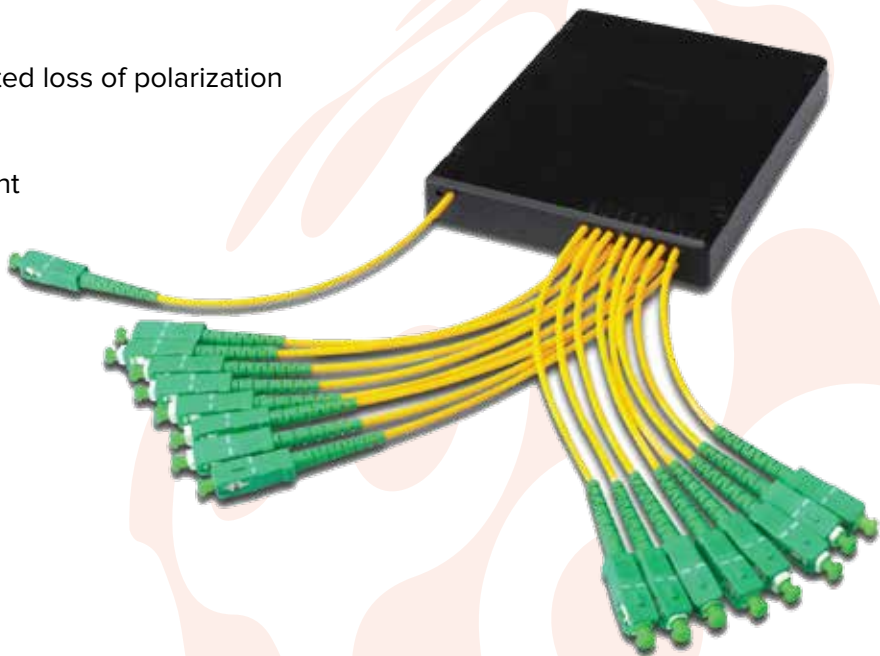
- Ultra-end insertion loss and associated loss of polarization
- Good spectral uniformity
- Wide wavelength bandwidth,
- A wide range of working environment
- High reliability
- Small Size

Applications

- Can be widely used for FTTx
- Passive Optical Network (OPN)
- Cable TV Network (CATV)
- Other optical signal splitter system

Standard compliance

- Telcordia GR-1209-CORE
- Telcordia GR-1209-CORE
- YD/T1117-2001



Specification

Parameter 1 x N		Unit	1x2	1x4	1x8	1x16	1x32	1x64
Insertion Loss	Standard	dB	3.6	7.0	10.2	13.3	16.5	20.0
	MAX (P/S)		3.8/4.0	7.2/7.4	10.5/10.7	13.5/13.9	16.5/17.2	20.0/21.5
Parameter 2 x N			2x2	2x4	2x8	2x16	2x32	2x64
Insertion loss (P/S)			3.9/4.2	7.3/7.6	10.5/11.0	14.0/14.8	17.4/17.9	21.0/21.5
PDL		dB	≤0.2	≤0.2	≤0.2	≤0.3	≤0.3	≤0.3
Loss Uniformity		dB	≤0.6	≤0.8	≤1.0	≤1.4	≤1.6	≤1.9
Return Loss @1550nm		dB	≥55	≥55	≥55	≥55	≥55	≥55
Wavelength Dependent Loss		dB	≤0.5	≤0.5	≤0.5	≤0.5	≤0.5	≤0.5
Operating Wavelength			1260-1650					
Fiber Length		m	1.2(±0.1)or customer specified					
Fiber Type			Corning SMF-28e or customer specified					
Temperature Stability (-40 to+85°C)		dB	≤0.5					
Operation Temperature		°C	-40 to +85					
Max Optical input power		mW	300					

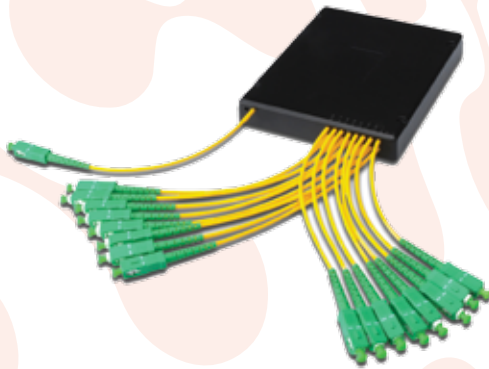
Remark: 1 operating wavelength varies by the design. The testing result offers the data of the 1310 to 1550nm.
 2 The data above include the loss of the connector.



BARE SPLITTER



BLOCKLESS SPLITTER



MODULE SPLITTER



ODF SPLITTER

Item		1x2	1x4	1x8	1x16	1x32	2x2	2x4	2x8	2x16	2x32
PLC BARE splitter	LxWxH	40x4x4			50x7x4	60x12x4		55x4x4		60x7x4	
PLC Blockless splitter With Fan-out	LxWxH	40x4x4			50x7x4	60x12x4		55x4x4		60x7x4	
PLC MODULE splitter with box	LxWxH	60x7x4			60x12x4	80x20x6		60x7x4		80x12x4	1000x20x6
PLC ODF Splitter Box	100x80x10	120x80x18			120x80x18/ 140x114x18	140x114x18		100x80x10		120x80x18	140x114x18

PLANAR LIGHT CIRCUIT SPLITTER	CONFIGURATION	PACKAGE STYLE	CABLE TYPE	INPUT CONNECTORS	OUTPUT CONNECTORS	FIBER TYPE	LEAD LENGHT INPUT	LEAD LENGHT OUTPUT
PLC	1x2=1x2	C=Compact(100x80x10mm)	0=250µm	N=NONE	N=NONE	9D=G65D	1=1 METER	1=1 METER
	1x4=1x4	M=Medium(142x102x14.5mm)	0.9=900um	E2=E2000/UPC	E2=E2000/UPC	9A=G657A1	2=2 METER	2=2 METER
	1x8=1x8	L=LGX Box	2=2mm	E2A=E2000/APC	E2A=E2000/APC		3=3 METER	3=3 METER
	1x16=1x16	R=Rackmount 19"1U	3=3mm	F=FC/UPC	F=FC/UPC	
	1x32=1x32			FA=FC/APC	FA=FC/APC			
	1x64=1x64			MA=MU/APC	MA=MU/APC			
	2x2=2x2			M=MU/UPC	M=MU/UPC			
	2x4=2x4			S=SC/UPC	S=SC/UPC			
	2x8=2x8			SA=SC/APC	SA=SC/APC			
	2x16=2x16			ST=ST/UPC	ST=ST/UPC			
	2x32=2x32							
	2x64=2x64							

PLC 1x2 C 2 S S 9A 1 1

Explanation: PLC Splitter 1x2 Compact size, with 2mm 1m length SC input and SC output cords of G657A fiber.

MPO/MTP Fan-out Cable

Low insertion loss and back reflection loss / Good exchangeability / Good Durability / High temperature stability / Reduce maintenance and creates consistent optical performance / Stable performance / Telcordia specification GR-1435-CORE

Applications

- Data center
- Storage Area Network
- Cabinet-to-cabinet connections
- Short distance connections within a single rack or cabinet



Performance

	MPO/MTP SM	MPO OM3/OM4
Insertion Loss, Max	<0.5 dB	<0.5 dB
Return Loss	>50 dB	>20dB

Ordering information:

FIBER COUNT	A CONNECTOR	B CONNECTOR	FIBER TYPE	-	LENGTH	SHEET TYPE				
12	MTPM - MPO/MTP Male	LC - LC UPC	9 - Singlemode 9/125 OS2		0.5 - 0.5m	P - PVC				
24	MTPF - MPO/MTP Female	SC - SC UPC	51 - Multimode 62.5/125 OM1		1 - 1m	L - LSZH				
48		ST - ST UPC	52 - Multimode 50/125 OM2		1.5 - 1.5m					
		FC - FC UPC	53 - Multimode 50/125 OM3		2 - 2m					
		E2 - E2000 UPC	54 - Multimode 50/125 OM4		...					
		SCA - SC APC								
		LCA - LC APC								
		STA - ST APC								
		FCA - FC APC								
		E2A - E2000 APC								
				12	MTPM	LC	54	-	20	L

Explanation: 12 fiber MTP male LSZH cable with 24 LC OM4 fanouts, 20m long

MPO Trunk Cable

MPO trunk cable with round micro-core cable is suitable for data-center applications, 3.0mm outer diameter is easy for the management.

Low insertion loss and back reflection loss / Good exchangeability.

Features

Good Durability / High temperature stability / Reduce maintenance and creates consistent optical performance / Stable performance / Telcordia specification GR-1435-CORE

Applications

- Data center
- Storage Area Network
- Cabinet-to-cabinet connections
- Short distance connections within a single rack or cabinet



Performance

	MPO SM standard	MPO OM3/OM4 standard
Insertion Loss, max	<0.5 dB	<0.5 dB
Return Loss	>50 dB	>20dB

Ordering information:

FIBER COUNT	A CONNECTOR	B CONNECTOR	FIBER TYPE	-	LENGTH	SHEET TYPE				
12	MTPM - MPO/MTP Male	MTPM - MPO/MTP Male	9 - Singlemode 9/125 OS2		0.5 - 0.5m	PE - PE				
24	MTPF - MPO/MTP Female	LCMTPF - MPO/MTP Female - LC UPC	51 - Multimode 62.5/125 OM1		1 - 1m	L - LSZH				
48			52 - Multimode 50/125 OM2		2 - 2m	A - Armored				
			53 - Multimode 50/125 OM3		3 - 3m	AL - Armored LSZH				
			54 - Multimode 50/125 OM4		...					
				24	MTPF	MTPM	9	-	20	L

Explanation: 24 fiber MTP female – MTP Male SM 20m long trunk cable with LSZH sheath

MPO/MTP UltraDensity system - High Density MPO panels

SOMI NETWORKS MPO/MTP UltraDensity System is probably the best MPO/MTP solution, when saving space in your datacenter or other application is critical. The most dense solution you will find on the market, was designed for growing needs for space saving in the Datacenters.

Features

- Ultra High Density
- Up to 144 fibers in 1U!
- Easy Installation
- Rear and front cable management solution
- Sliding drawers for easy access
- Possible to mount on open racks with only two 19" frames
- All panels comes fully loaded with empty MTP modules

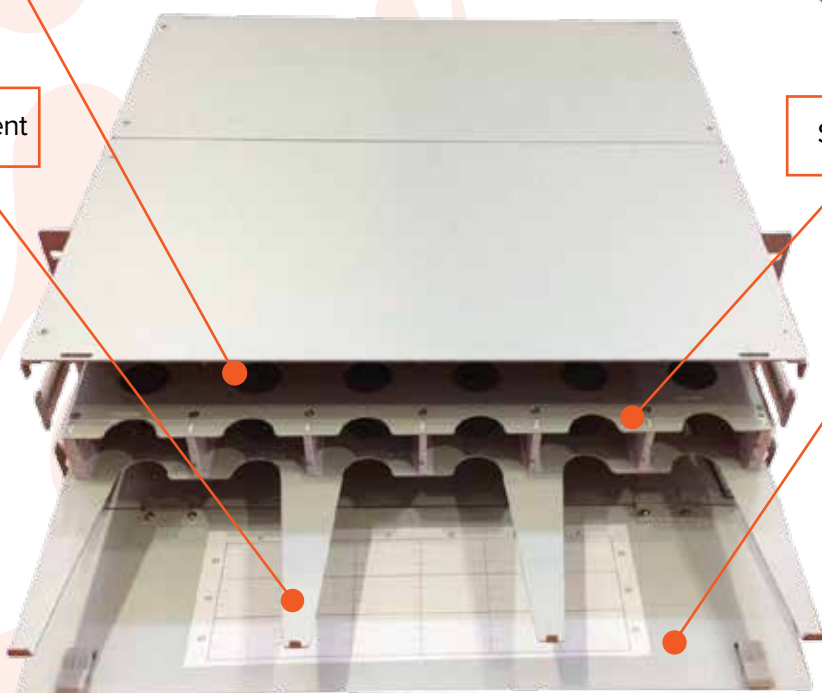


Up to 6 modules in 1U

Front cable management

Sliding module drawers

Closed ODF construction, to ensure safety of installed system



Ordering information:

UltraDensity series ODF have 1U, 2U, 3U, 4U design for choices. Detailed specification as below:

Item	Model	Dimension (W*H*D)	Drawer Quantity	Module/Quantity	Fiber count
1	UDO1U-144	482.6*1U*420	1	6	144
2	UDO2U-288	482.6*2U*420	2	12	288
3	UDO3U-432	482.6*3U*420	3	18	432
4	UDO4U-576	482.6*4U*420	4	24	576

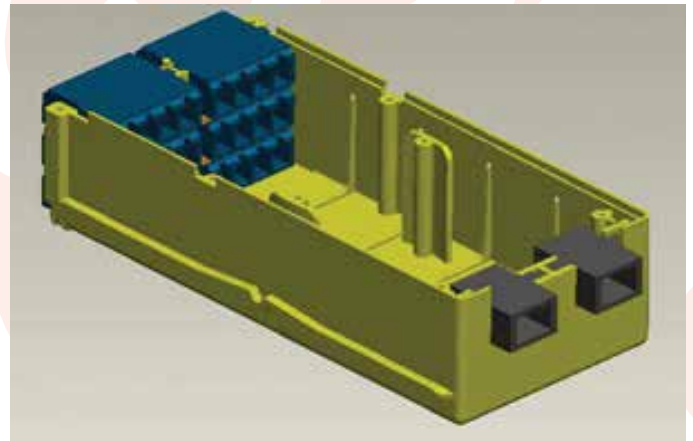
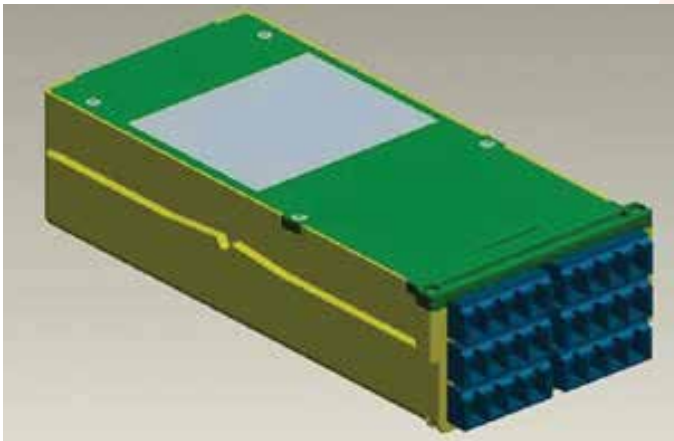
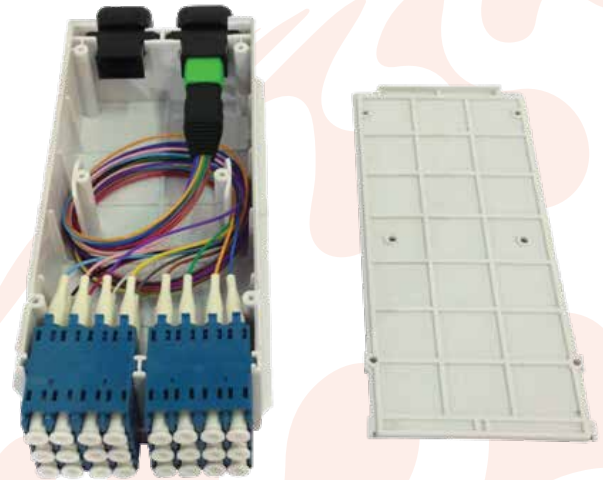
MPO/MTP UltraDensity Module, for High Density MPO modules

SOMI NETWORKS MPO/MTP UltraDensity System is probably the best solution, when saving space in your datacenter or other application is critical.

UltraDensity modules are probably smallest solution in fiber optic market, which allows to instal six 24fiber modules in 1U, making such system the highest density possible.

Features

- High Density
- LC, SC and other options
- 12 fibers/24fibers options
- Easy Installation in UltraDensity panels



MPO Adapter

Features

- Low insertion and back reflection loss
- Good exchangeability
- Good durability
- High temperature stability
- Standard: Telcordia GR-326-CORE

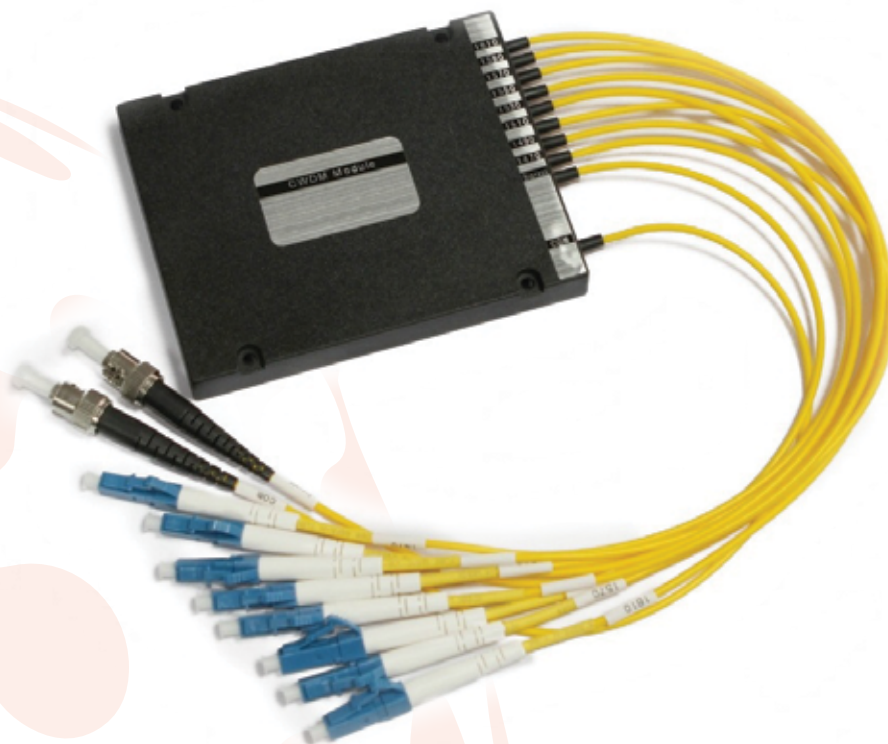
Applications

- Data center
- Storage Area Network
- Cabinet-to-cabinet connections
- Short distance connections within a single rack or cabinet



Performance

Characteristics	Value
Insertion Loss	<0.2dB
Durability 500 Matings	<0.2dB
Operating Temperature	-40°C ~ +75°C
Storage Temperature	-50°C ~ +85°C



Description

Somi Networks offers a full range of CWDM Mux-Demux and Optical Add Drop Multiplexer (OADM) units to suit all kinds applications and network solutions. Some most common ones are: Gigabit & 10G Ethernet, SDH/SONET, ATM, ESCON, Fibre Channel, FTTx and CATV.

Coarse wavelength division multiplexer (CWDM Mux/Demux) utilizes thin film coating technology and proprietary design of non-flux metal bonding micro optics packaging. It provides low insertion loss, high channel isolation, wide pass band, low temperature sensitivity and epoxy free optical path.

Our CWDM Mux Demux products provide up to 16-channel or even 18-channel Multiplexing on a single fiber. Due the the low insertion loss is needed in WDM networks, we can also add "Skip Component" in a CWDM Mux/Demux module to reduce the IL as an option. Standard CWDM Mux/Demux package type include: ABS box package, LGX package and 19" 1U rackmount.

Application

- Line Monitoring
- WDM Network
- Telecommunication
- Cellular Application
- Fiber Optical amplifier
- Access Network

Features

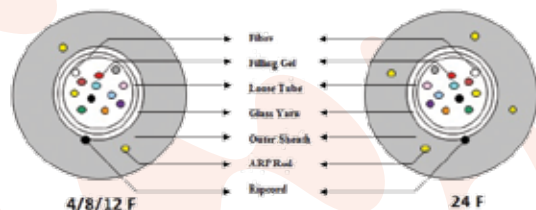
- Low Insertion loss
- Wide pass band
- High Channel Isolation
- High Stability and reliability
- Epoxy-free on Optical Path

Parameter	1x2		1x4		1x8		1x16	
	Mux	Demux	Mux	Demux	Mux	Demux	Mux	Demux
Center Wavelength (nm)	ITU, ITU+1							
Passband (nm)	ITU±6.5							
Operating Wavelength (nm)	1260~1620							
Channel Space (nm)	20							
Fiber Type	SMF-28e or customer specified							
IL (dB) (P/A Grade)	0.7/1.0		1.4/1.7		2.0/2.5		3.5/4.0	
Isolation (dB)	Adjacent Channel		≥ 30					
	Non-Adjacent		≥ 45					
	Express Port		≥ 12					
Ripple (dB)	0.3		0.4		0.5		0.5	
PDL (dB)	≤ 0.1							
PMD (ps)	≤ 0.1							
Return Loss (dB)	≤ 45							
Directivity (dB)	≤ 50							
Maximum Optical Power (mw)	500							
Operating Temperature (°C)	-20~+70							
Storage Temperature (°C)	-40~85							
BOX Package (mm)	100*80*10						140*115*18	
LGX Package	1U, 2U							
19" Rack mount Package	1U							

Ordering information

CWDM	NUMBER OF CHANNELS	MODULE TYPE	CABLE TYPE	-	FIBER LENGTH	INPUT CONNECTORS	OUTPUT CONNECTORS
	01=1 Channel	C= Compact100x80x10mm	09=900um		0=0.5m	N=NONE	N=NONE
	02=2 Channel	M=Medium(142x102x14.5mm)	2=2.0mm		1=1.0m	LC=LC/UPC	LC=LC/UPC
	03=3 Channel	L=LGX Box	3=3.0mm		2=2m	LCA=LC/APC	LCA=LC/APC
	...	R=Rackmount 19"1U			3=3m	SC=SC/UPC	SC=SC/UPC
	18=18Channel				4=4m	SCA=SC/APC	SCA=SC/APC
					5=5m	FC=FC/UPC	FC=FC/UPC
					...	FCA=FC/APC	FCA=FC/APC

4-24F SINGLEMODE UNITUBE



Applications

- Underground duct and lashed aerial
- Trunk, distribution and feeder cable
- Local loop, metro, long-haul and broadband network

Features

- Durable design for reliable transmission performance over a broad temperature range
- Rip cord for ease of entry
- Small cable diameter

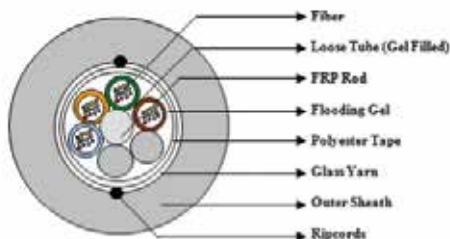
Optical Fibre Characteristics	
Fibre Type	G.652D (OS2)
Attenuation at 1310 nm	≤ 0.38 dB/km
Attenuation at 1550 nm	≤ 0.25 dB/km
Chromatic Dispersion 1285 - 1330 nm	≤ 3.5 ps/nm.km
Chromatic Dispersion 1550 nm	≤ 18 ps/nm.km
Zero Dispersion Wavelength	1300 - 1324 nm
Zero Dispersion Slope	≤ 0.092 ps/nm ² .km
Polarisation Mode Dispersion	≤ 0.2 ps/√km
Cut-off Wavelength λ_{cc}	≤ 1260 nm
Mode Field Diameter at 1310 nm	9.2 ± 0.4 μm
Core Cladding Concentricity Error	≤ 0.8 μm
Cladding Diameter	125 ± 1 μm
Cladding Non-circularity	≤ 1%
Coating Diameter (Uncolored)	245 ± 10 μm

Ordering information

4-SM-UT-UA	4 fibers Single Mode unitube cable
8-SM-UT-UA	8 fibers Single Mode unitube cable
12-SM-UT-UA	12 fibers Single Mode unitube cable
24-SM-UT-UA	24 fibers Single Mode unitube cable

Cable construction details		
Number of Fibers per tube	4 / 8 / 12	24
Number of Loose Tubes	1	1
Loose Tube ID/OD	1.2/1.8 ± 0.1 mm PBT	1.2/1.8 ± 0.1 mm PBT
Peripheral Strength Member	0.5 ± 0.05 mm ARP Rod	0.5 ± 0.05 mm ARP Rod
Peripheral Strength Member	Glass Yarn	Glass Yarn
Rip Cord	1 HDPE - Black	1 HDPE - Black
Outer Sheath	1.5 mm (Nominal) HDPE - Black	1.4 mm (Nominal) HDPE - Black
Overall Cable Diameter	5.0 ± 0.3 mm	7.0 ± 0.5 mm
Cable Weight	22.0 ± 3 kg/km	46 ± 5 kg/km
Tensile Strength	350 N	500 N
Crush Resistance	1000 N/10cm	1500 N/10cm
Torsion	± 360 °	± 360 °
Minimum Bend Radius	20 x D	20 x D
Installation temperature	- 30 °C + 70 °C	- 30 °C + 70 °C
Operation/Storage temperature	- 30 °C + 70 °C	- 30 °C + 70 °C

48F SINGLEMODE MULTITUBE



Applications

- Underground duct and lashed aerial
- Trunk, distribution and feeder cable
- Local loop, metro, long-haul and broadband network

Features

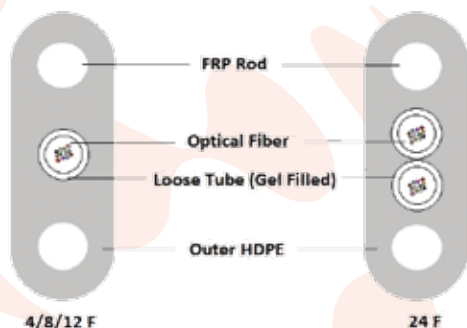
- Durable design for reliable transmission performance over a broad temperature range
- Rip cord for ease of entry
- Small cable diameter

Optical Fibre Characteristics	
Fibre Type	G.652D (OS2)
Attenuation at 1310 nm	≤ 0.38 dB/km
Attenuation at 1550 nm	≤ 0.25 dB/km
Chromatic Dispersion 1285 - 1330 nm	≤ 3.5 ps/nm.km
Chromatic Dispersion 1550 nm	≤ 18 ps/nm.km
Zero Dispersion Wavelength	1300 - 1324 nm
Zero Dispersion Slope	≤ 0.092 ps/nm ² .km
Polarisation Mode Dispersion	≤ 0.2 ps/√km
Cut-off Wavelength λ_{cc}	≤ 1260 nm
Mode Field Diameter at 1310 nm	9.2 ± 0.4 μm
Core Cladding Concentricity Error	≤ 0.8 μm
Cladding Diameter	125 ± 1 μm
Cladding Non-circularity	≤ 1 %
Coating Diameter (Uncolored)	245 ± 10 μm

Ordering information	
48-SM-MLT-UA	48 fibers Single Mode multitube cable

Cable construction details	
Number of Fibers per tube	12
Number of Loose Tubes	4
Loose Tube ID/OD	1.3/2.0 ± 0.1 mm PBT
Central Strength Member	2.1 ± 0.1 mm FRP Rod
Number of Fillers	2 HDPE Black
Moisture Barrier	Flooding Gel
Core Wrapping	Polyester Tape
Peripheral Strength Member	Glass Yarn
Outer Sheath	1.25 mm (Nominal)
Number of Ripcords	2 Polyester
Overall Cable Diameter	9.0 ± 0.5 mm
Cable Weight	75 ± 10 kg/km
Tensile Strength Long Term	1500 N
Tensile Strength Short Term	3000 N
Crush Resistance	2000 N/100 mm
Torsion	± 360°
Minimum Bend Radius	20 x D
Installation temperature	- 30 °C + 70 °C
Operation/Storage temperature	- 30 °C + 70 °C

4-24F SINGLEMODE FLAT DROP



Applications

- For self-supporting aerial, direct buried, and duct FTTX drop installations

Features

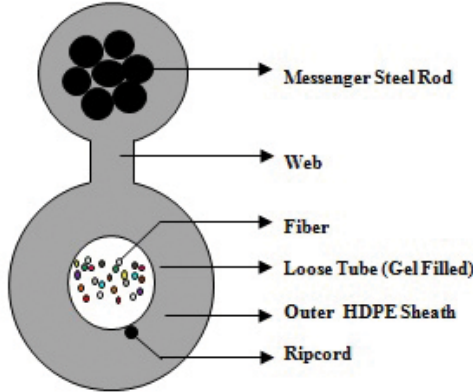
- Compact, lightweight and durable self-supporting construction
- Easy-to-access design
- Ensured performance and reliability over a broad operating temperature range

Optical Fibre Characteristics	
Fibre Type	G.652D (OS2)
Attenuation at 1310 nm	≤ 0.38 dB/km
Attenuation at 1550 nm	≤ 0.25 dB/km
Chromatic Dispersion 1285 - 1330 nm	≤ 3.5 ps/nm.km
Chromatic Dispersion 1550 nm	≤ 18 ps/nm.km
Zero Dispersion Wavelength	1300 - 1324 nm
Zero Dispersion Slope	≤ 0.092 ps/nm ² .km
Polarisation Mode Dispersion	≤ 0.2 ps/√km
Cut-off Wavelength λ_{cc}	≤ 1260 nm
Mode Field Diameter at 1310 nm	9.2 ± 0.4 μm
Core Cladding Concentricity Error	≤ 0.8 μm
Cladding Diameter	125 ± 1 μm
Cladding Non-circularity	≤ 1 %
Coating Diameter (Uncolored)	245 ± 10 μm

Ordering information	
4-SM-FLAT-A	4 fibers Single Mode FLAT unitube cable
8-SM-FLAT-A	8 fibers Single Mode FLAT unitube cable
12-SM-FLAT-A	12 fibers Single Mode FLAT unitube cable
24-SM-FLAT-A	24 fibers Single Mode FLAT unitube cable

Cable construction details		
Number of Fibers	4 / 8 / 12	24
Number of Loose Tubes	1	2
Loose Tube ID/OD	1.1/1.7 ± 0.1 mm	1.1/1.7 ± 0.1 mm
Peripheral Strength Member	2.0 ± 0.05 mm	1.8 ± 0.05 mm
Outer Sheath	0.75 mm (Nominal)	0.75 mm (Nominal)
Overall Cable Dimensions	(3.5 x 7.5) ± 0.3 mm	(3.4 x 8.8) ± 0.4 mm
Cable Weight	32 ± 5 kg/km	35 ± 5 kg/km
Tensile Strength	1000 N	1000 N
Crush Resistance	2000 N/10cm	2000 N/10cm
Minimum Bend Radius	20 x D	20 x D
Span	40-50 m	40-50 m
Installation temperature	- 30 °C + 70 °C	- 30 °C + 70 °C
Operation/Storage temperature	- 30 °C + 70 °C	- 30 °C + 70 °C

4-24F SINGLEMODE UNITUBE FIG 8



Applications

- Outdoor aerial installations
- Campus type environments
- Local loop, metro, long-haul and broadband network

Features

- Durable design for reliable transmission performance over a broad temperature range
- Economical construction for aerial cabling application
- Small cable diameter

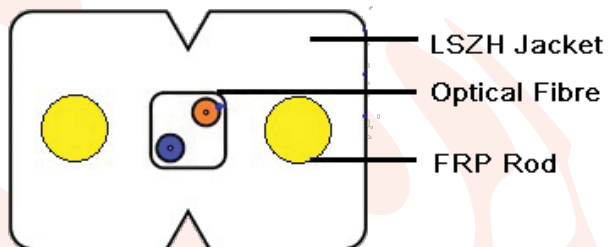
Optical Fibre Characteristics	
Fibre Type	G.652D (OS2)
Attenuation at 1310 nm	≤ 0.38 dB/km
Attenuation at 1550 nm	≤ 0.25 dB/km
Chromatic Dispersion 1285 - 1330 nm	≤ 3.5 ps/nm.km
Chromatic Dispersion 1550 nm	≤ 18 ps/nm.km
Zero Dispersion Wavelength	1300 - 1324 nm
Zero Dispersion Slope	≤ 0.092 ps/nm ² .km
Polarisation Mode Dispersion	≤ 0.2 ps/√km
Cut-off Wavelength λ_{cc}	≤ 1260 nm
Mode Field Diameter at 1310 nm	9.2 ± 0.4 μm
Core Cladding Concentricity Error	≤ 0.8 μm
Cladding Diameter	125 ± 1 μm
Cladding Non-circularity	≤ 1 %
Coating Diameter (Uncolored)	245 ± 10 μm

Ordering information

4-SM-UT-FIG8	4 fibers Single Mode unitube FIG8 aerial cable
8-SM-UT-FIG8	8 fibers Single Mode unitube FIG8 aerial cable
12-SM-UT-FIG8	12 fibers Single Mode unitube FIG8 aerial cable
24-SM-UT-FIG8	24 fibers Single Mode unitube FIG8 aerial cable

Cable construction details		
Number of Fibers per tube	4/8/12	24
Number of Loose Tubes	1	1
Loose Tube ID/OD	1.2/1.8 ± 0.1 mm	2.6/3.5 ± 0.1 mm
Messenger Wire	0.9 mm x 7 Nos	0.9 mm x 7 Nos
Rip Cord	1	1
Cable Dimensions (W x H)	4.5 x 10.5 ± 1 mm	5.8 x 12.0 ± 1 mm
Cable Weight	60.0 ± 5 kg	75.0 ± 10 kg
Tensile Strength	4000 N	4000 N
Crush Resistance	2000 N	2000 N
Minimum Bend Radius	20 X D	20 X D
Span	50 m	50 m
Installation temperature	- 30 °C + 70 °C	- 30 °C + 70 °C
Operation/Storage temperature	- 30 °C + 70 °C	- 30 °C + 70 °C

2F FTTH



Applications

- Internal FTTH applications horizontal and riser

Features

- Compact, lightweight
- Rip cord for ease of entry

Optical Fibre Characteristics	
Fibre Type	G.657.A1
Mode Field Diameter at 1310nm	9.0±0.4 μm
Mode Field Diameter at 1550nm	10.1±0.5 μm
Cladding Diameter	124.8±0.7 μm
Cladding Non-Circularity	≤0.7 %
Core-Cladding Concentricity Error	≤0.5 μm
Coating Diameter	245±5 μm
Coating Non-Circularity	≤6.0 %
Cladding-Coating Concentricity Error	≤12.0 μm
Cable Cutoff Wavelength	cc ≤1260 μm
Attenuation (max.) at 1310nm	≤0.35 dB/km
Attenuation (max.) at 1550nm	≤0.21 dB/km
Macro-Bending Loss 1turn×10mm radius @1550nm	≤0.75 dB

Ordering information

N-FTTH2F 2 fibers Single Mode resistant FTTH cable, G657A fiber

Cable construction details	
Number of Fibers	2 (Blue, Orange)
Fiber Coating	250±15μm
Strength Member	0.5mm FRP
Jacket	3.0±0.1mm×2.0±0.1mm
Jacket Material, Color	LSZH, White
Tension (Long Term)	(3.5 x 7.5) ± 0.3 mm
Tension (Short Term)	32 ± 5 kg/km
Crush (Long Term)	1000 N
Crush (Short Term)	2000 N/10cm
Min. Bend Radius (Dynamic)	20 x D
Min. Bend Radius (Static)	10 x D
Installation temperature	- 20 °C + 60 °C
Operation/Storage temperature	- 40 °C + 70 °C



Best tool for preparing this cable for splicing is SN13139A. You will easily cut off the outer sheath, and prepare it for fiber stripping.

*Detailed specification you will find in tool section of the catalogue.

TH-001 FIBER OPTIC TERMINATION BOX FOR 2 FIBERS

Applications

- Widely used in FTTH (Fibre To The Home) applications
- FTTH (Fibre To The Home) interfaces

Features

- Ergonomic design
- Fiber routing for bend radius protection
- Removable cover for easy access
- Tough and longlife plastic material

Technical specification and ordering information

Part number	Dimensions mm (H x W x D)	Fiber capacity	Adapter type	Cable ports
TH-001	86 x 86 x 19	2	SC simplex / LC duplex	4 x Ø5mm



TH-002 FIBER OPTIC TERMINATION BOX FOR 4 FIBERS

Applications

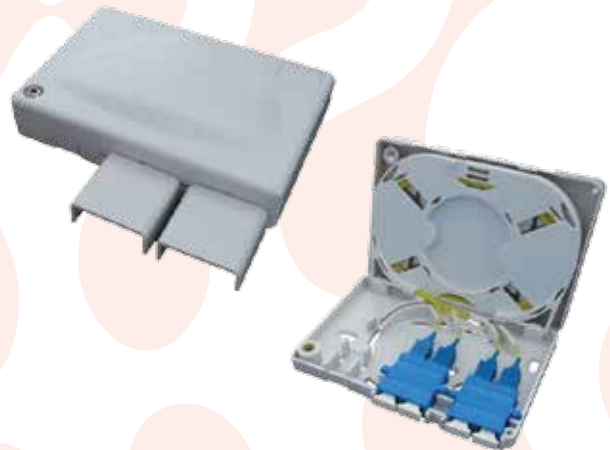
- Widely used in FTTH (Fibre To The Home) applications
- FTTH (Fibre To The Home) interfaces

Features

- Ergonomic design
- Fiber routing for bend radius protection
- Removable cover for easy access
- Tough and longlife plastic material

Technical specification and ordering information

Part number	Dimensions mm (H x W x D)	Fiber capacity	Adapter type	Cable ports
TH-002	80 x 120 x 25	4	SC simplex / LC duplex / LC quad	1 x Ø10mm



TB-007 FIBER OPTIC TERMINATION BOX FOR 4 FIBERS

Applications

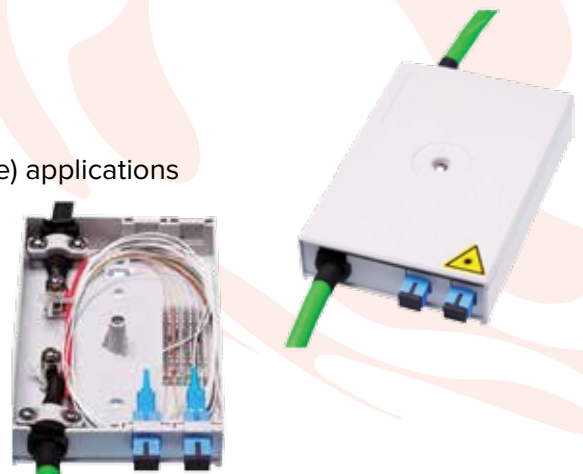
- For inhouse distribution points in FTTH (Fibre To The Home) applications

Features

- Ergonomic design
- Fiber routing for bend radius protection
- Removable cover for easy access
- Tough and longlife plastic material

Technical specification and ordering information

Part number	Dimensions mm (H x W x D)	Fiber capacity	Adapter type	Cable ports
TB-007	152 x 107 x 31	4	SC simplex / LC duplex	2 x Ø10mm



TB-008 FIBER OPTIC TERMINATION BOX FOR 12 FIBERS

Applications

- For inhouse distribution points in FTTH (Fibre To The Home) applications

Features

- Ergonomic design
- Fiber routing for bend radius protection
- Removable cover for easy access
- Tough and longlife plastic material



Technical specification and ordering information

Part number	Dimensions mm (H x W x D)	Fiber capacity	Adapter type	Cable ports
TB-008	107 x 152 x 31	12	SC simplex / LC duplex	2 x Ø10mm

TB-001 FIBER CONNECTION/DISTRIBUTION BOX FOR UP TO 24 FIBERS

Applications

- For inhouse distribution points in FTTH (Fibre To The Home) applications

Features

- Ergonomic design
- Fiber routing for bend radius protection
- Removable cover for easy access
- Tough and longlife plastic material



Technical specification and ordering information

Part number	Dimensions mm (H x W x D)	Fiber capacity	Adapter type	Cable ports
TB-001	265 x 154 x 56	24	Max 4 x 6 fibers	2 x Ø10mm

TB-002 FIBER CONNECTION/DISTRIBUTION BOX FOR UP TO 12 FIBERS

Applications

- For inhouse distribution points in FTTH (Fibre To The Home) applications

Features

- Ergonomic design
- Fiber routing for bend radius protection
- Removable cover for easy access
- Tough and longlife plastic material



Technical specification and ordering information

Part number	Dimensions mm (H x W x D)	Fiber capacity	Adapter type	Cable ports
TB-002	200 x 110 x 45	12	Max 2 x 6 fibers	2 x Ø10mm

TB-DIN1 FIBER OPTIC BOX DIN RAIL MOUNTABLE

Applications

- For inhouse distribution points in FTTH (Fibre To The Home) applications
- Electric / communication cabinets, where DIN rail mounting applicable

Features

- Ergonomic design
- Fiber routing for bend radius protection
- Removable cover for easy access
- Tough and longlife plastic material

Technical specification and ordering information

Part number	Dimensions mm (H x W x D)	Fiber capacity	Adapter type	Cable ports
TB-DIN1	125 x 35 x 132	12	SC duplex / LC quad	4 x Ø10mm



TB-X50-NN FIBER OPTIC TRANSITION/CONNECTION BOX FOR UP TO 4 FIBERS

Applications

- For inhouse distribution points in FTTH (Fibre To The Home) applications

Features

- Ergonomic design
- Fiber routing for bend radius protection
- Removable cover for easy access
- Tough and longlife plastic material

Technical specification and ordering information

Part number	Dimensions mm (H x W x D)	Fiber capacity	Cable ports
TB-X50-NN	82 x 82 x 36	4	2 x Ø10mm; 4 x Ø5mm



CTB-1 FIBER OPTIC BOX FOR MEDIA CONVERTER

Applications

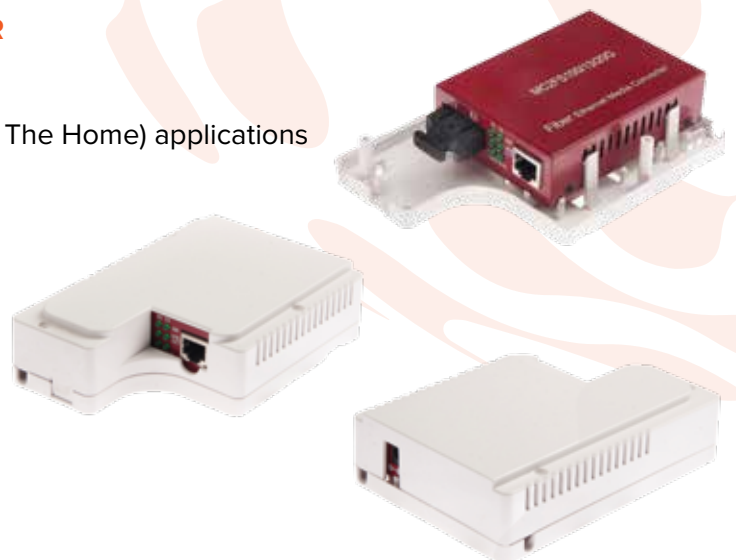
- For inhouse distribution points in FTTH (Fibre To The Home) applications

Features

- Ergonomic design
- Fiber routing for bend radius protection
- Removable cover for easy access
- Tough and longlife plastic material

Technical specification and ordering information

Part number	Dimensions mm (H x W x D)
CTB-1	142 x 100 x 40



FTB-1 FIBER OPTIC TERMINATION BOX FOR UP TO 12 FIBERS

Applications

- For inhouse distribution points in FTTH (Fibre To The Home) applications

Features

- Ergonomic design
- Fiber routing for bend radius protection
- Removable cover for easy access
- Material – 1.2mm steel sheet



Technical specification and ordering information

Part number	Dimensions mm (H x W x D)	Fiber capacity	Adapter type	Cable ports
FTB-1	210 x 153 x 32	12	1 x 12 fibers	4 x Ø9mm

FTB-8SC/4DSC FIBER OPTIC TERMINATION BOX FOR 8 FIBERS

Applications

- For inhouse distribution points in FTTH (Fibre To The Home) applications

Features

- Ergonomic design
- Fiber routing for bend radius protection
- Removable cover for easy access
- Material – 1.2mm steel sheet



Technical specification and ordering information

Part number	Dimensions mm (H x W x D)	Fiber capacity	Adapter type	Splice trays	Cable ports
FTB-8SC	210 x 153 x 32	8	SC simplex	1 x 12 fibers	2 x Ø9mm
FTB-4DSC	210 x 153 x 32	8	SC duplex	1 x 12 fibers	2 x Ø9mm
FTB-8ST	210 x 153 x 32	8	ST simplex	1 x 12 fibers	2 x Ø9mm

FTB-12SC/6DSC/12ST FIBER OPTIC TERMINATION BOX FOR 12 FIBERS

Applications

- For inhouse distribution points in FTTH (Fibre To The Home) applications

Features

- Ergonomic design
- Fiber routing for bend radius protection
- Removable cover for easy access
- Material – 1.2mm steel sheet



Technical specification and ordering information

Part number	Dimensions mm (H x W x D)	Fiber capacity	Adapter type	Splice trays	Cable ports
FTB-12SC	210 x 225 x 32	12	SC simplex	1 x 12 fibers	2 x Ø9mm
FTB-6DSC	210 x 225 x 32	12	SC duplex	1 x 12 fibers	2 x Ø9mm
FTB-12ST	210 x 225 x 32	12	ST simplex	1 x 12 fibers	2 x Ø9mm

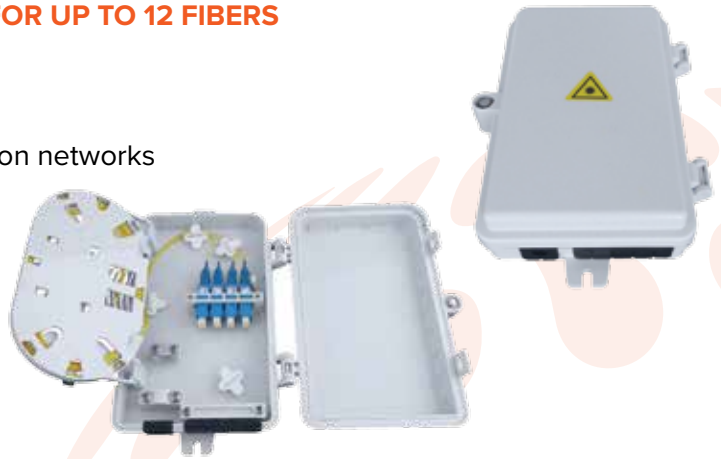
TB-X04 FIBER CONNECTION/DISTRIBUTION BOX FOR UP TO 12 FIBERS

Applications

- Indoor/outdoor applications
- Data centres, premise installations, telecommunication networks

Features

- Lightweight and easy to install
- Fiber routing for bend radius protection
- Clear and secure fiber management
- Tough and longlife plastic case



Technical specification and ordering information

Part number	Dimensions mm (H x W x D)	Fiber capacity	Adapter type	Splice trays	Cable ports Grade	IP
TB-X04	240 x 210 x 40	12	SC simplex / LC duplex	1 x 12 fibers	1 x Ø8mm; 4 x Ø3mm	IP55

TB-Y04 FIBER CONNECTION/DISTRIBUTION BOX FOR UP TO 12 FIBERS

Applications

- Indoor/outdoor applications
- Data centres, premise installations, telecommunication networks

Features

- Lightweight and easy to install
- Fiber routing for bend radius protection
- Clear and secure fiber management
- Tough and longlife plastic case



Technical specification and ordering information

Part number	Dimensions mm (H x W x D)	Fiber capacity	Adapter type	Splice trays	Cable ports Grade	IP
TB-Y04	210 x 174 x 74	12	SC simplex / LC duplex	1 x 12 fibers	1 x Ø8mm; 4 x Ø3mm	IP65

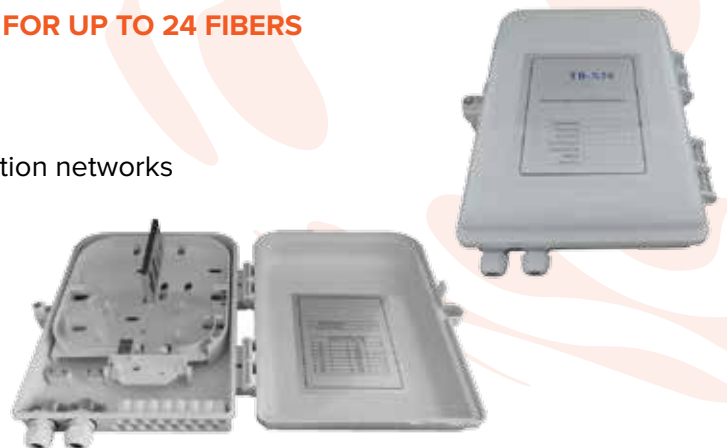
TB-X20 FIBER CONNECTION/DISTRIBUTION BOX FOR UP TO 24 FIBERS

Applications

- Indoor/outdoor applications
- Data centres, premise installations, telecommunication networks

Features

- Lightweight and easy to install
- Fiber routing for bend radius protection
- Clear and secure fiber management
- Tough and longlife plastic case



Technical specification and ordering information

Part number	Dimensions mm (H x W x D)	Fiber capacity	Adapter type	Splice trays	Cable ports Grade	IP
TB-X20	320 x 260 x 90	24	SC simplex / LC duplex	1 x 24 fibers	2 X Ø12mm	IP67

TB-X30B FIBER CONNECTION/DISTRIBUTION BOX FOR UP TO 16 FIBERS

Applications

- Indoor/outdoor applications
- Data centres, premise installations, telecommunication networks

Features

- Lightweight and easy to install
- Fiber routing for bend radius protection
- Clear and secure fiber management
- Tough and longlife plastic case



Technical specification and ordering information

Part number	Dimensions mm (H x W x D)	Fiber capacity	Adapter type	Splice trays	Cable ports Grade	IP
TB-X30B	215 x 200 x 54	16	SC simplex / LC duplex	1 x 16 fibers	2 X Ø12mm	IP67

TB-X100 FIBER CONNECTION/DISTRIBUTION BOX FOR UP TO 8 FIBERS

Applications

- Indoor/outdoor applications
- Data centres, premise installations, telecommunication networks

Features

- Lightweight and easy to install
- Fiber routing for bend radius protection
- Clear and secure fiber management
- Tough and longlife plastic case



Technical specification and ordering information

Part number	Dimensions mm (H x W x D)	Fiber capacity	Adapter type	Splice trays	Cable ports Grade	IP
TB-X100	168 x 132 x 33	8	SC simplex / LC duplex	1 x 8 fibers	2 X Ø12mm; 8 X Ø5mm	IP43

19" FIBER OPTIC PATCH PANELS



Excellent quality and functionality fiber optic patch panels. Designed to meet the highest expectations of customers by offering flexible solution with the ability to use a full array of adapter types, simple installation, easy maintenance and access. Panels supplied unloaded and pre-loaded.

Application

- Indoor applications
- Data communication
- Ethernet, Fibre Channel, ATM, LAN, MAN and WAN
- Data centres, premise installations, telecommunication networks

Features

- Fits standard 19"
- Individually labelled ports
- Multiple adaptor options available
- Ability to use a full array of adapter types
- Unloaded and pre-loaded options
- Standard colour RAL 7035 (Light Grey). Optional colour RAL 9005 (Black)

Technical specification and ordering information

Part number	Description	Dimensions mm (H x W x D)		
		Height	Width	Depth
19" 1U	Fiber Optic Patch Panel	42	443	241
19"/2U	19" 2U Fiber Optic Patch Panel	88	443	241
19"/3U	19" 3U Fiber Optic Patch Panel	132	443	241

Part number	Front Plates Types
1U12DSC	1U Front Plate 12 SC Duplex / LC Quad /
1U12SC	1U Front Plate 12 SC Simplex / LC Duplex / MTRJ / E2000
1U24SC	1U Front Plate 24 SC Simplex / LC Duplex / MTRJ / E2000
1U24DSC	1U Front Plate 24 SC Duplex / LC Quad
1U12ST	1U Front Plate 12 ST/FC Simplex
1U24ST	1U Front Plate 24 ST/FC Simplex
2U48DSC	2U Front Plate 48 SC Duplex / LC Quad
2U48SC	2U Front Plate 48 SC Simplex / LC Duplex / MTRJ / E2000
3U72DSC	3U Front Plate 72 SC Duplex / LC Quad
3U96SC	3U Front Plate 96 SC Simplex / LC Duplex / MTRJ / E2000



CABLE GLANDS

- Durable nylon construction
- IP 68 rating
- CE / RoHS compliant



Ordering information

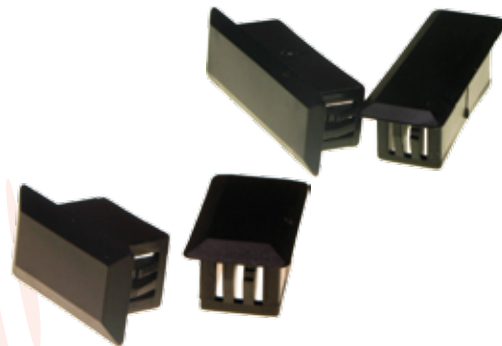
Part number	Cable Glands
SN17003-PG9	Cable Range: 4 - 8 mm
SN17003-PG11	Cable Range: 5 - 10 mm
SN17003-PG13.5	Cable Range: 6.7 - 12 mm
SN17003-PG16	Cable Range: 10.2 - 14 mm
SN17003-PG21	Cable Range: 13 - 18 mm

BLANK COVER FOR UNUSED PATCH PANEL PORTS

- Blank plugs to cover unused patch panel ports, and to ensure a tidy and professional installation.
- CE / RoHS compliant

Ordering information

Part number	Blank Plug Types
SN13043A	ST adapter type blank plug
SN13043B	SC simplex adapter type blank plug
SN13043C	SC duplex adapter type blank plug

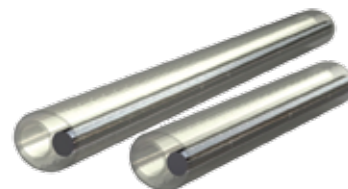


OPTICAL FIBRE HEAT SHRINK PROTECTION SLEEVE

- Splice protectors to maintain the strength & environmental stability of optical fibre cables after fusion splicing
- Easy to use and install without damaging splice
- Maintains optical properties of fibre
- heat shrinkable outer tube, hot melt fusion tube and stainless steel strength rod
- Clear sleeve to allow visual location of splice prior to shrinking
- 45mm and 60mm length

Ordering information

Part number	Heat Shrink Sleeves
SMOUV Z-45	45mm Heat shrink sleeve
SMOUV Z-60	60mm heat Shrink sleeve



BUNNY CLIPS

Cable management clips are usually used for fiber management in fiber optic panels and boxes.

Ordering information

MT-TIE	Bunny Clip rings for cable management
--------	---------------------------------------



SC/ST holder Keystone tpe

Plate for SC simplex, LC duplex and ST adapter instalation in Keystone standart ports

Ordering information

SN12305C	SC simplex and LC duplex adapter holder, for Keystone ports
SN12305D	ST adapter holder, for Keystone ports



Fiber dome splice closures



Applications

- Aerial, pole-mounting, wall-mounting and underground applications
- For long haul, metro, local access (xDSL, HFC, wireless backhaul)
- FTTx deployments where aerial, below-grade and direct buried, sealed optical fiber splicing is required

Features

- Ease of installation and re-entry into the closure, no special tools required
- Installation over existing cables without disturbing a working cable
- Constructed of durable, water-proof, UV and chemical resistant material
- Robust body has high mechanical strength against impact
- Efficient fiber management system

Technical specification and ordering information

Part Number	Height	Diameter	Splicing capacity	Splice trays	Cable ports
SC-209	280mm	178mm	48	Max. 4 (12 splices/tray)	1 oval port for looped 13mm cable 3 round ports Ø16mm
B-102B	540mm	180mm	96	Max. 4 (24 splices/tray)	1 oval port for looped 22mm cable 4 round ports Ø19mm
B-102B-8	540mm	180mm	96	Max. 4 (24 splices/tray)	1 oval port for looped 25mm cable 8 round ports Ø19mm
SC-221	450mm	260mm	120	Max. 5 (24 splices/tray)	1 oval port for looped 24mm cable 4 round ports Ø17,5mm
SC-204	450mm	230mm	144	Max. 6 (24 splices/tray)	1 oval port for looped 24mm cable 4 round ports Ø17,5mm
SC-224A	450mm	230mm	144	Max. 6 (24 splices/tray)	1 oval port for looped 22mm cable 2 round ports Ø17,5mm 2 round ports Ø24mm
SC-224B	450mm	230mm	168	Max. 7 (24 splices/tray)	1 oval port for looped 22mm cable 2 round ports Ø17,5mm 2 round ports Ø24mm
SC-220	488mm	285mm	288	Max. 12 (24 splices/tray)	1 oval port for looped 30mm cable 6 round ports Ø30mm
B-103	710mm	260mm	576	Max. 8 (72 splices/tray)	1 oval port for looped 32mm cable 5 round ports Ø25mm

Fiber in-line splice closures



Applications

- Aerial, pole-mounting, wall-mounting and underground applications
- For long haul, metro, local access (xDSL, HFC, wireless backhaul)
- FTTx deployments where aerial, below-grade and direct buried, sealed optical fiber splicing is required

Features

- Ease of installation and re-entry into the closure, no special tools required
- Installation over existing cables without disturbing a working cable
- Constructed of durable, water-proof, UV and chemical resistant material
- Robust body has high mechanical strength against impact
- Efficient fiber management system

Technical specification and ordering information

Part Number	Height	Length	Width	Splicing capacity	Cable ports	Splice trays
SC-F01	80mm	300mm	105mm	12	4 round ports Ø10mm	
SC-F02	26mm	179mm	72mm	12	4 round ports Ø10mm	
SC-106	100mm	432mm	186mm	96	4 round ports Ø22mm	Max. 4 (24 splices/tray)

FIBER BOX SPLICE CLOSURES



Applications

- Aerial, pole-mounting, wall-mounting and underground applications
- For long haul, metro, local access (xDSL, HFC, wireless backhaul)
- FTTx deployments where aerial, below-grade and direct buried, sealed optical fiber splicing is required

Features

- Ease of installation and re-entry into the closure, no special tools required
- Installation over existing cables without disturbing a working cable
- Constructed of durable, water-proof, UV and chemical resistant material
- Robust body has high mechanical strength against impact
- Efficient fiber management system

Technical specification and ordering information

Part Number	Height	Length	Width	Splicing capacity	Cable ports	Splice trays
SC-101	900mm	280mm	200mm	48	2 round ports Ø14mm	Max. 4 (12 splices/tray)
SC-103	86mm	323mm	202mm	96	6 round ports Ø2x13mm/2x16mm/2x21mm	Max. 8 (12 splices/tray)

FIBER OPTIC CLEANER PEN

Fiber Optic Cleaner Pen is designed to specially work well with the female connectors. This instrument cleans the ferrule end faces removing dust, oil, and other debris without nicking or scratching the end face.

Applications: Ferrules & Adapters Cleaning SC/FC/ST/E2000/LC/MU/SMPTE/LEMO

Ordering information:



Part Number	Description
CLEP 2.5	SC/ST/FC Cleaner Pen, universal 2.5mm
CLEP 1.25	LC/MU Cleaner Pen, universal 1.25mm

CLEANING BOX FOR FIBER OPTIC CONNECTORS

These Cassettes are for ferrule cleaning, as essential and low cost clean tool to maintain good quality of fiber optic connection.

CLEP-BOX is standard version, and they are made of fine high tense cloth fiber and are refillable to save your cost.

Cleaner cassette is the best non-alcohol cleaning method for various fiber optic terminations such as SC, FC, MU, LC, ST, D4, DIN etc.

Features:

- Special non-alcohol superfine fiber
- Well handled and antistatic
- Friendly using efficient cleaning
- Easy to replace the tape no pollutions
- Cleaning time: 500+
- Level of cleaning is 100

Ordering information:



Part Number	Description
CLEP-BOX	Cleaning cassette for 500+ cleanings

MPO/MTP CLEANER PEN

The MPO Cleaner is a high-performance device designed for cleaning the ferrule end-faces of MPO & MTP connectors. Cost effective tool for cleaning fiber end-faces without the use of alcohol. It saves time by effectively cleaning all 12 fibers at once. The MPO connector cleaner is designed to clean both exposed jumper ends and connectors in Adapters.

Features:

- Effective on a variety of contaminates including dust and oils
- Capable of cleaning ferrules with or without guide pins
- Capable of cleaning MPO ferrules inside or outside an MPO adaptor
- Narrow design reaches tightly spaced MPO adapters
- Easy one-handed operation
- Up too 500cleanings

Applications

- Clean multimode and single-mode (angled) MPO connectors
- Clean MPO connectors in adaptors
- Clean exposed MPO ferrules

Ordering information:



Part Number	Description
CLEP-MPO	Cleaning pen for MPO/MTP adapters and endfaces of conectors

FTTH FIBER OPTICAL CABLE STRIPPER

This tool makes the work with drop fiber optic cables easy and comfortable.

Part Number	Description
SN13139A	FTTH cable stripper (for drop cable preparation)



FIBER OPTICAL „TRI-HOLE“ STRIPPER

Fiber optic tool, for removal of 0.25mm, 0.9mm and 2.0mm (3mm) coating of fiber optic cables. Three options in one handy tool!

Part Number	Description
SN13160	Fiber optic „tri-hole“ stripper (0.25mm, 0.9mm, 2.0mm, 3.0mm)



FIBER OPTICAL KEVLAR SCISSORS

Ergonomic fiber optic scissors, for cutting the kevlar of fiber optic cable.

Part Number	Description
SN13069	Fiber optic kevlar scissors



VISUAL FAULT LOCATOR (PEN TYPE)

Fiber optic laser, for visual inspection. 10mw output (testing distance 8-12KM)
 Finding the breakpoint, poor connections, bending or cracking in fiber optic cables.
 Optical connector: 2.5mm universal connector
 Power supply: 2 AA alkaline batteries (not included)

Part Number	Description
SN13142B	Visual fault locator 10mW



VISUAL FAULT LOCATOR (GRENADE TYPE)

Fiber optic laser, for visual inspection. 5mw output (testing distance 5-8KM)
 With turning protector for switch to avoid mistaken action on Switch
 Central wavelength: 650nm±10nm
 Optical connector: 2.5mm universal connector
 Power supply: 2 AA alkaline batteries (not included)

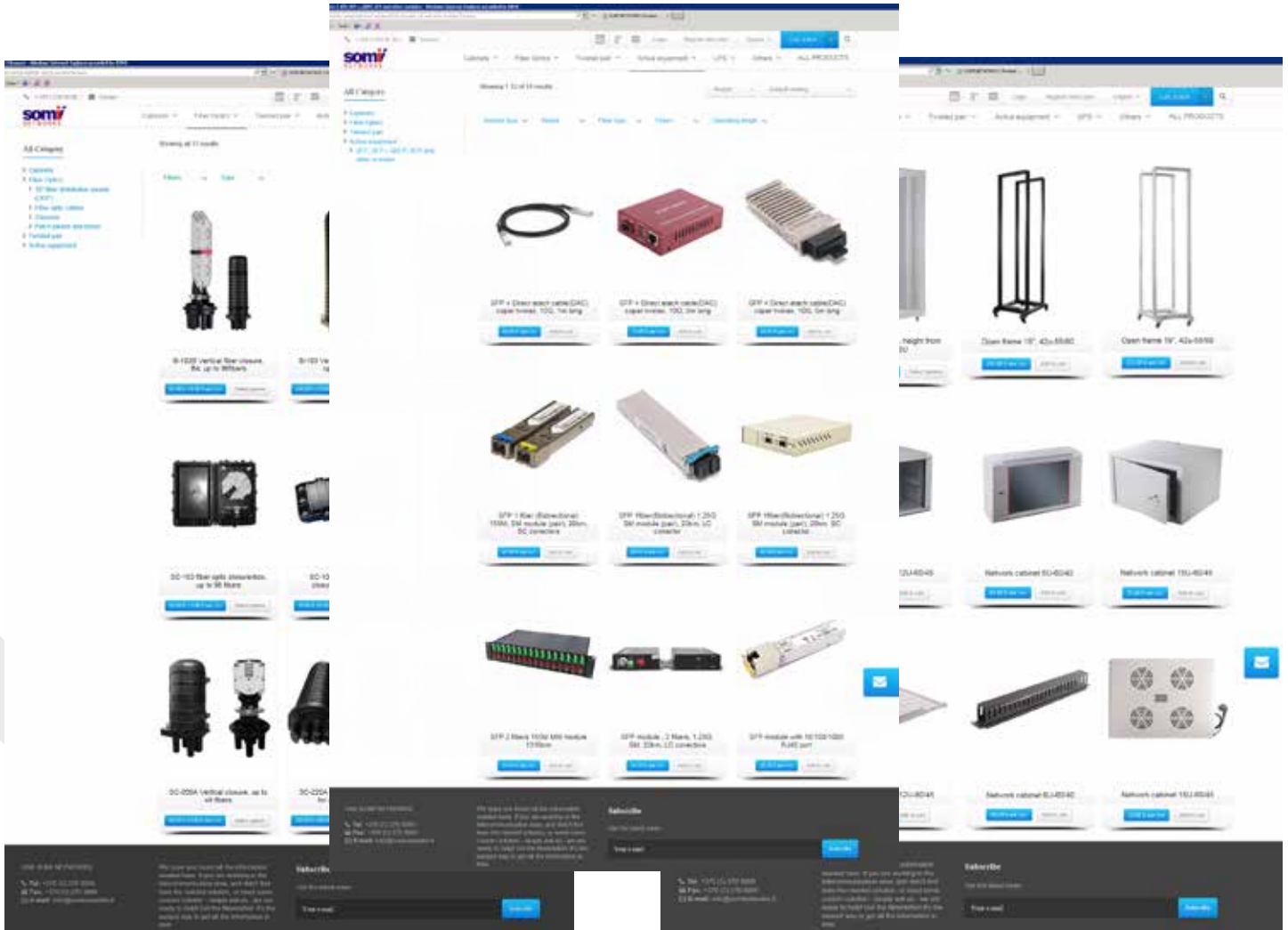
Part Number	Description
SN13146	Visual fault locator 5mW (with protected button)





FIND ALL LATEST CATALOGUES, SPECIFICATION SHEETS, MANUALS AND OTHER INFORMATION ON OUR WEBSITE:

www.sominetworks.com



Wide range of fiber optic cabling solutions, active equipment, 19" cabinets and accessories.



**HEADQUARTERS IN LITHUANIA:****SOMI NETWORKS, UAB**

Ukmerges str. 283A, LT-06313 Vilnius
Company Code: 300528292
VAT Number: LT100002144113

Phones

Tel.: + 370 5 270 90 00
Fax: + 370 5 270 90 66

E-Mail

info@sominetworks.com

LATVIA:**SOMI NETWORKS, SIA**

Jelgavas cels 20, LV-2167, Tîraine, Marupes nov.
Company Code: 40003830305
VAT Number: LV 40003830305

Phones

Tel.: + 371 67 408 939
Fax: + 371 67 408 941

E-Mail

sominetworks@sominetworks.lv

Due to the continuous development and progress, SOMI NETWORKS reserves the right to change products and their technical specifications without prior information. Printing errors or such changes shall not constitute grounds for compensation. All content of this catalogue is the property of SOMI NETWORKS, and is copyrighted.



somi
NETWORKS



info@sominetworks.com
www.sominetworks.com

